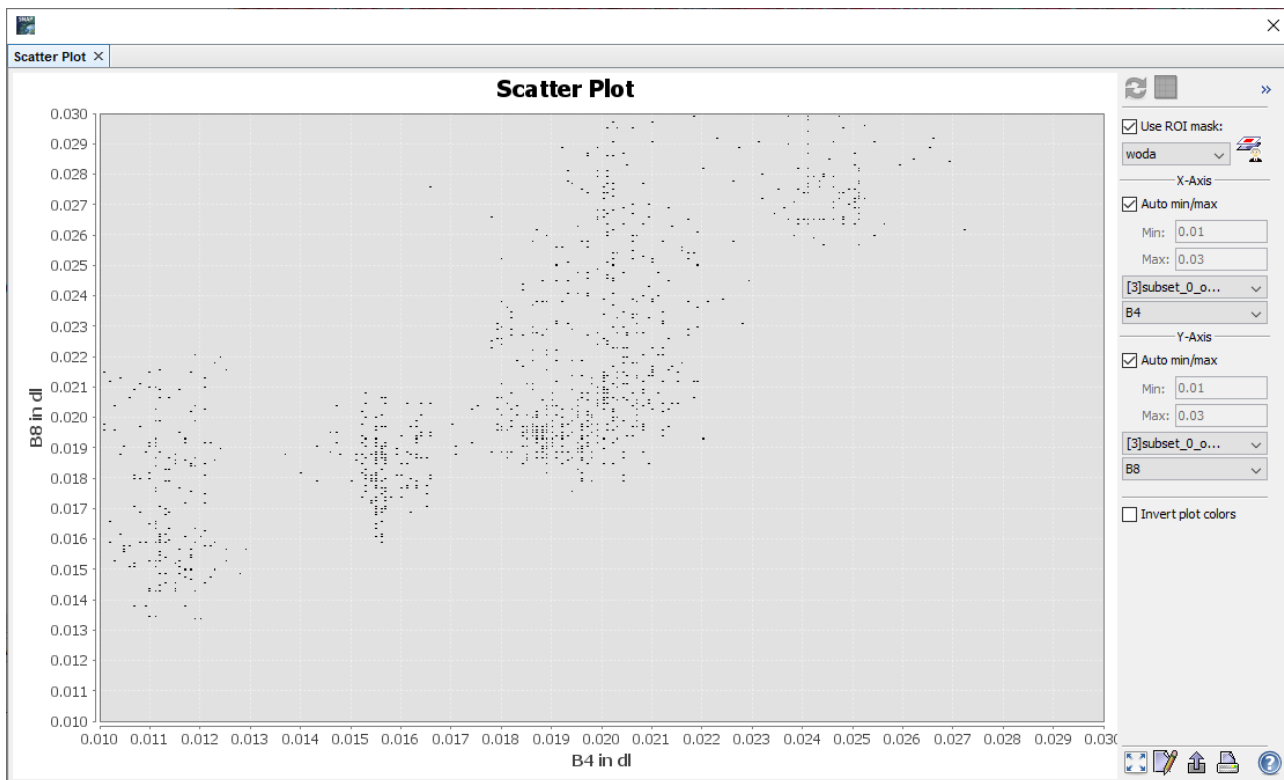
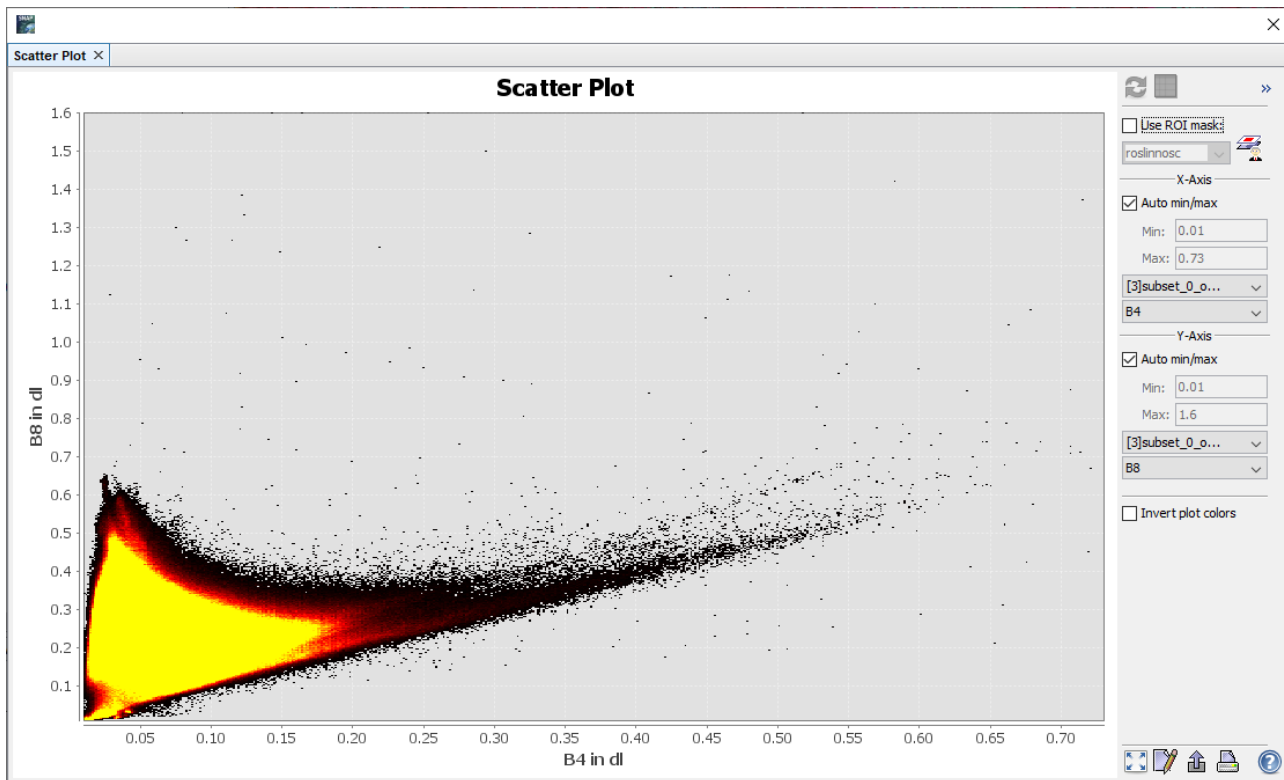
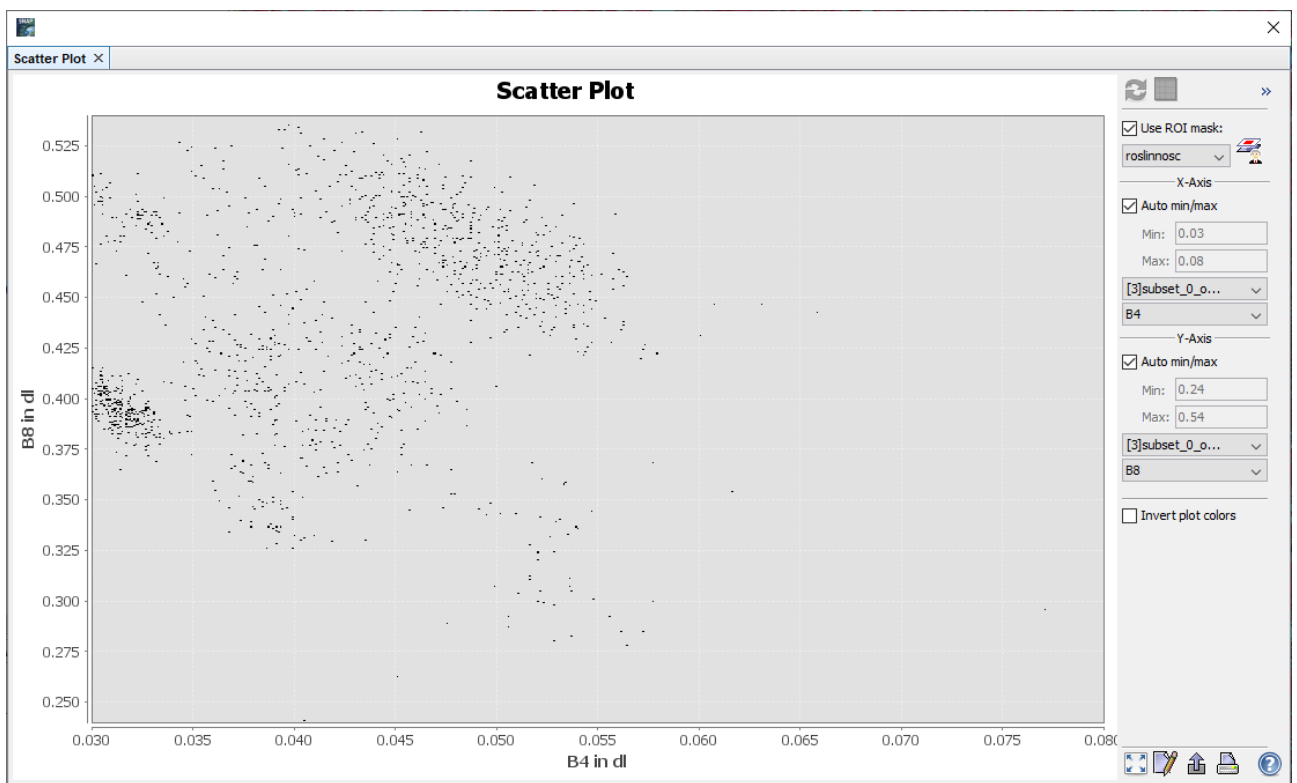
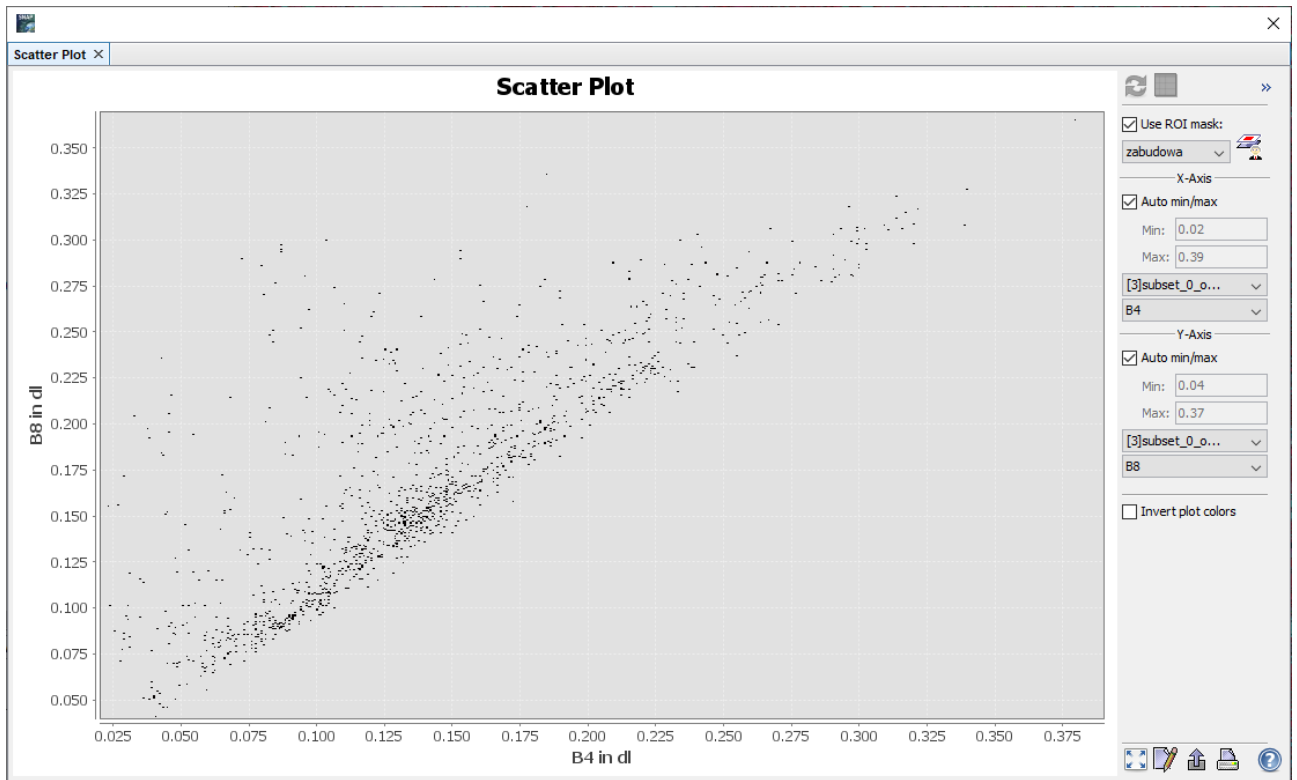
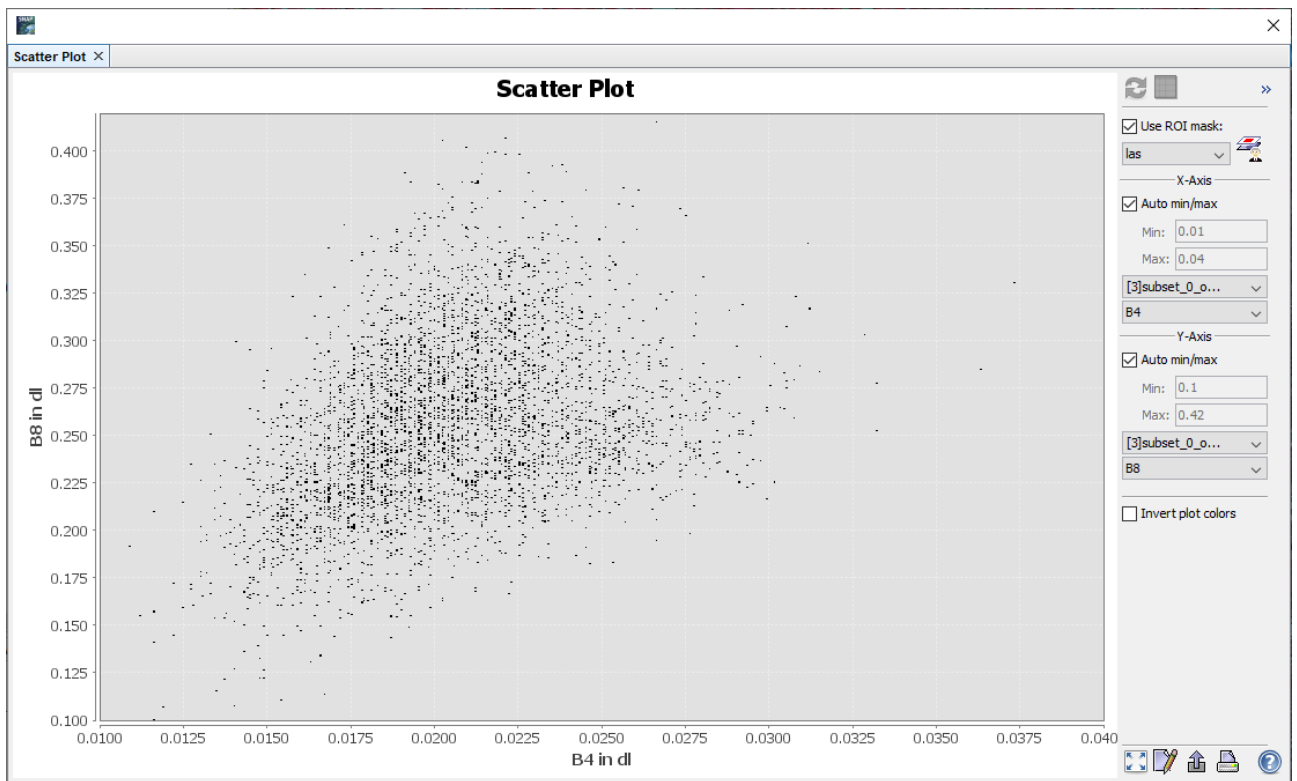
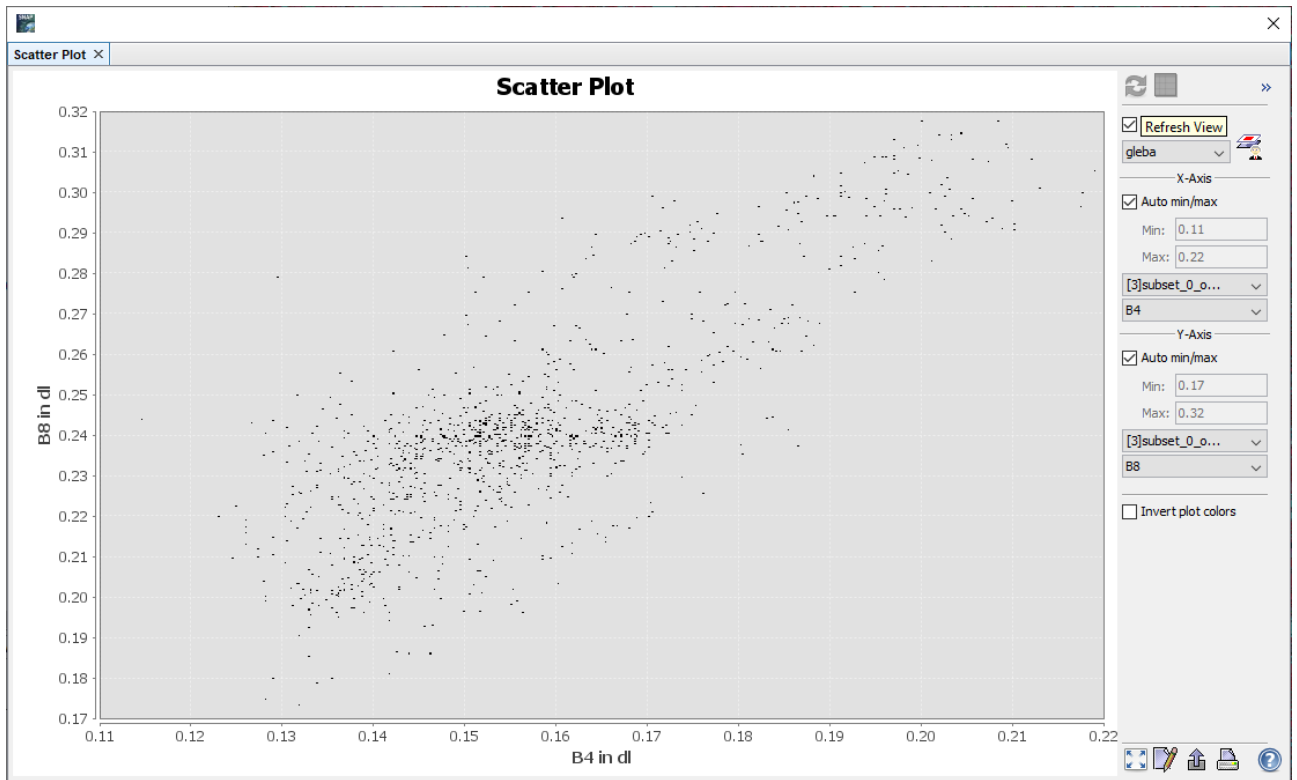
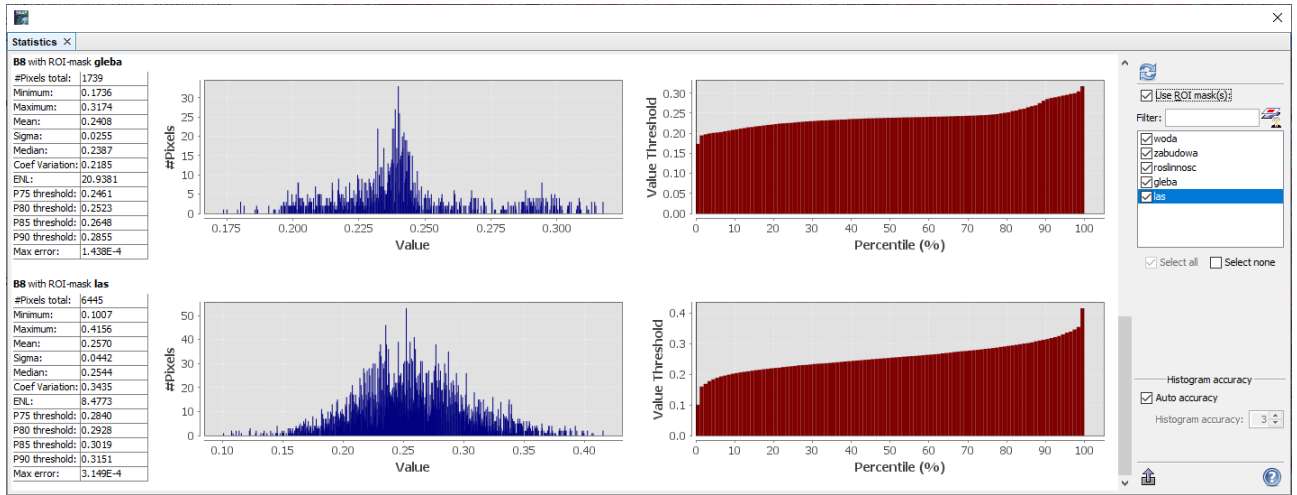
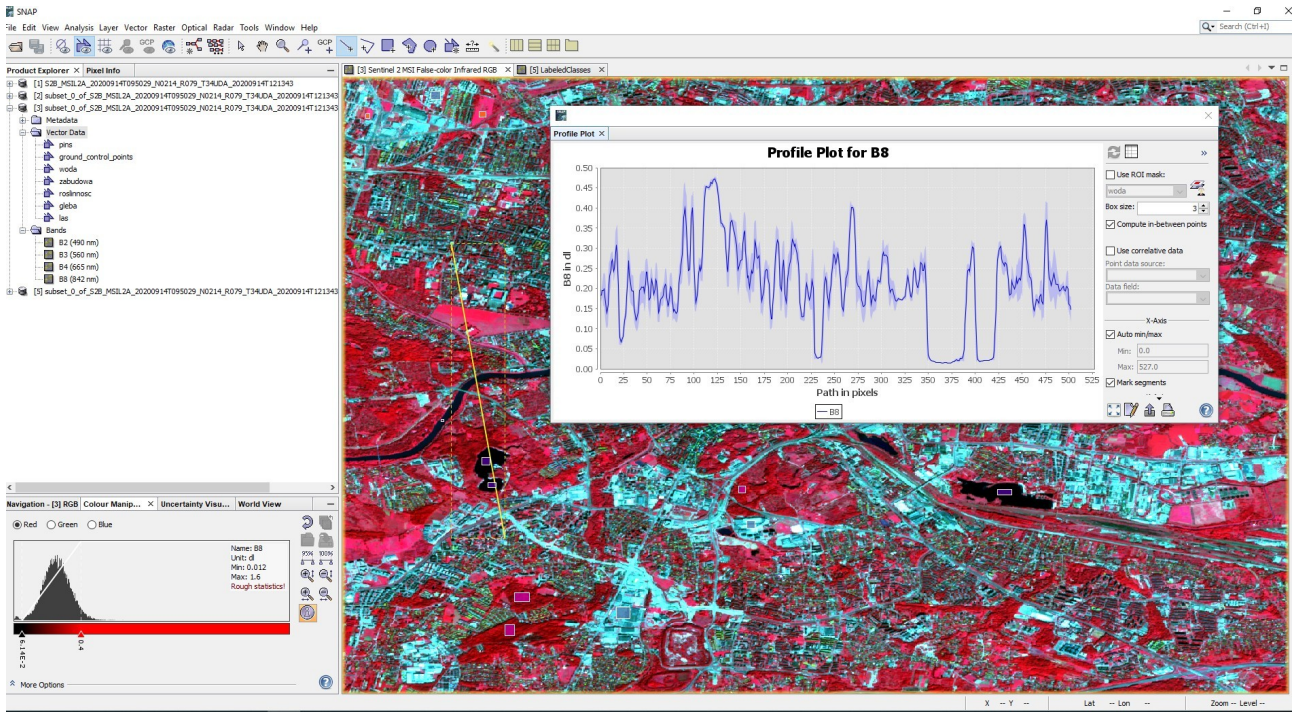


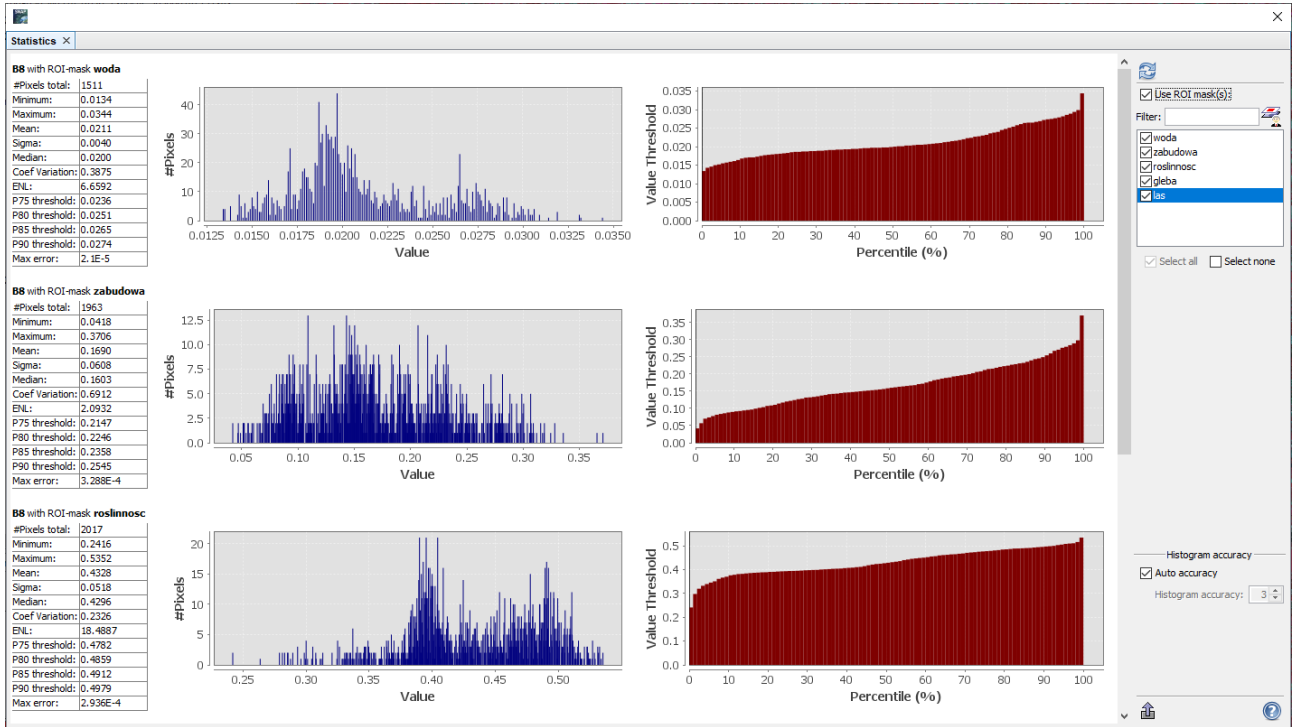
Analizy separatywności klas



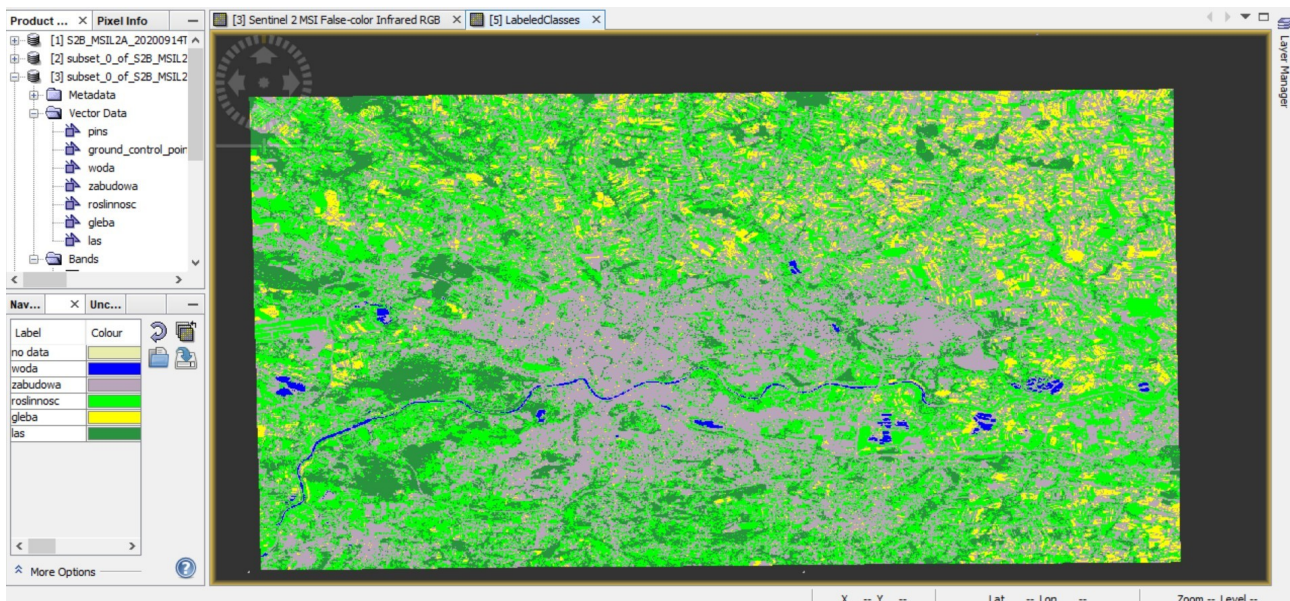
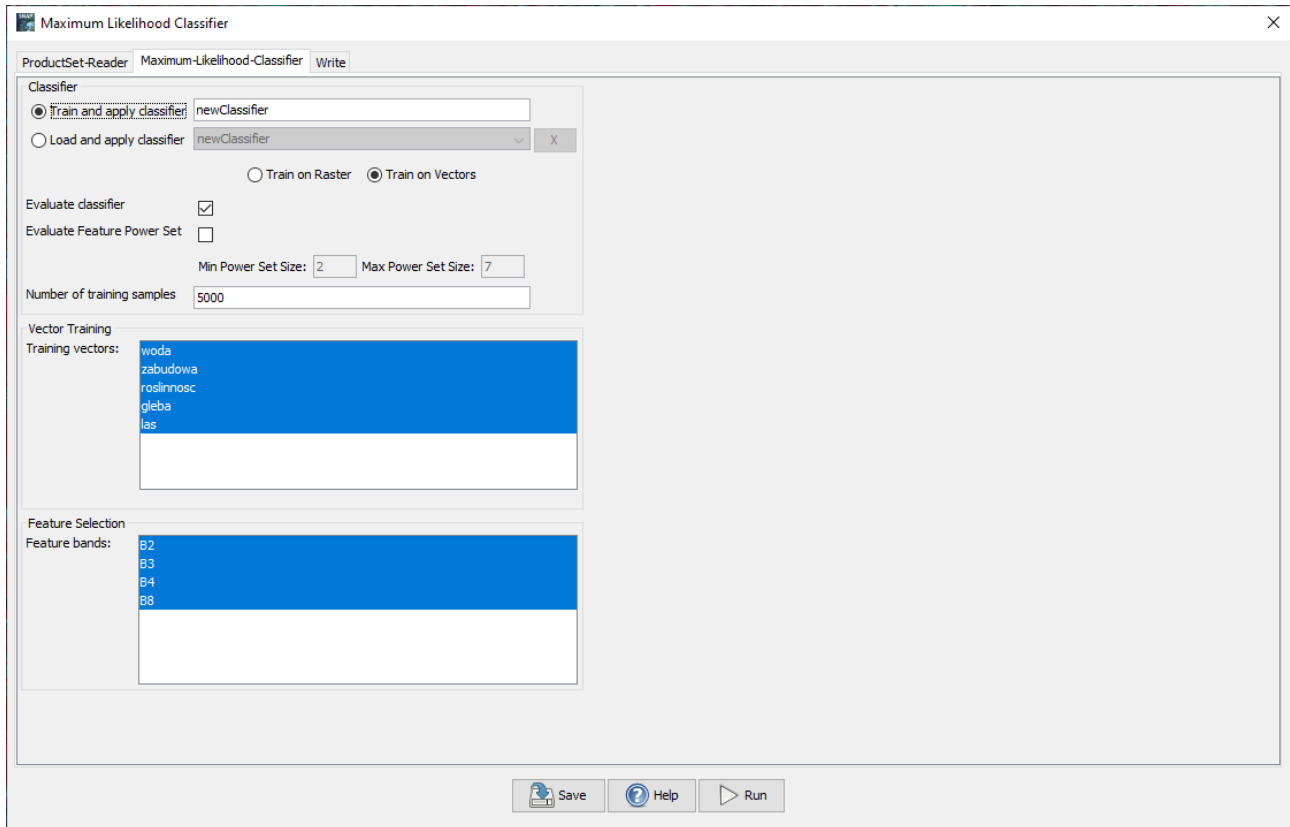








Wynik klasyfikacji



MaximumLikelihood classifier newClassifier_S2

Cross Validation

Number of classes = 5

class 0.0: woda

accuracy = 1.0000 precision = 1.0000 correlation = 1.0000 errorRate = 0.0000

TruePositives = 755.0000 FalsePositives = 0.0000 TrueNegatives = 3850.0000 FalseNegatives = 0.0000

class 1.0: zabudowa

accuracy = 0.9961 precision = 0.9959 correlation = 0.9884 errorRate = 0.0039

TruePositives = 967.0000 FalsePositives = 4.0000 TrueNegatives = 3620.0000 FalseNegatives = 14.0000

class 2.0: roslinnosc

accuracy = 0.9989 precision = 0.9950 correlation = 0.9968 errorRate = 0.0011

TruePositives = 1000.0000 FalsePositives = 5.0000 TrueNegatives = 3600.0000 FalseNegatives = 0.0000

class 3.0: gleba

accuracy = 0.9963 precision = 0.9852 correlation = 0.9880 errorRate = 0.0037

TruePositives = 865.0000 FalsePositives = 13.0000 TrueNegatives = 3723.0000 FalseNegatives = 4.0000

class 4.0: las

accuracy = 0.9987 precision = 0.9990 correlation = 0.9962 errorRate = 0.0013

TruePositives = 995.0000 FalsePositives = 1.0000 TrueNegatives = 3604.0000 FalseNegatives = 5.0000

Na ile wiarygodna jest ta wartość ?

Using Testing dataset, % correct predictions = 99.5005

Total samples = 9213

RMSE = 0.1451346299250268

Bias = 0.0023887079261672994

Distribution:

class 0.0: woda	1511	(16.4007%)
class 1.0: zabudowa	1963	(21.3068%)
class 2.0: roslinnosc	2000	(21.7085%)
class 3.0: gleba	1739	(18.8755%)
class 4.0: las	2000	(21.7085%)

Testing feature importance score:

Each feature is perturbed 3 times and the % correct predictions are averaged

The importance score is the original % correct prediction - average

rank 1 feature 1 : B2 score: tp=0.8669 accuracy=0.2328 precision=0.1530
correlation=0.7951 errorRate=-0.2328 cost=-0.5740 GainRatio = 0.5918

rank 2 feature 2 : B3 score: tp=0.8003 accuracy=0.2298 precision=0.2139
correlation=0.7227 errorRate=-0.2298 cost=-0.6295 GainRatio = 0.4866

rank 3 feature 3 : B4 score: tp=0.7837 accuracy=0.2577 precision=0.2035

correlation=0.7695 errorRate=-0.2577 cost=-0.6650 GainRatio = 0.5473

rank 4 feature 4 : B8 score: tp=0.5666 accuracy=0.2205 precision=0.4601

correlation=0.6469 errorRate=-0.2205 cost=-1.1606 GainRatio = 0.5040

Walidacja wyniku klasyfikacji

Na bdb dla chętnych ;-)