

Site location

- Software Geomedia Professional 6.0
- Data
 - regional GIS – Małopolska Region - Poland
- Limitation, suggestions
 - Not far than 1000 m from roads
 - Far than 200 m from rivers
 - Far than 500 km from urban (habitats) areas
 - Not in the already covered by any urban areas



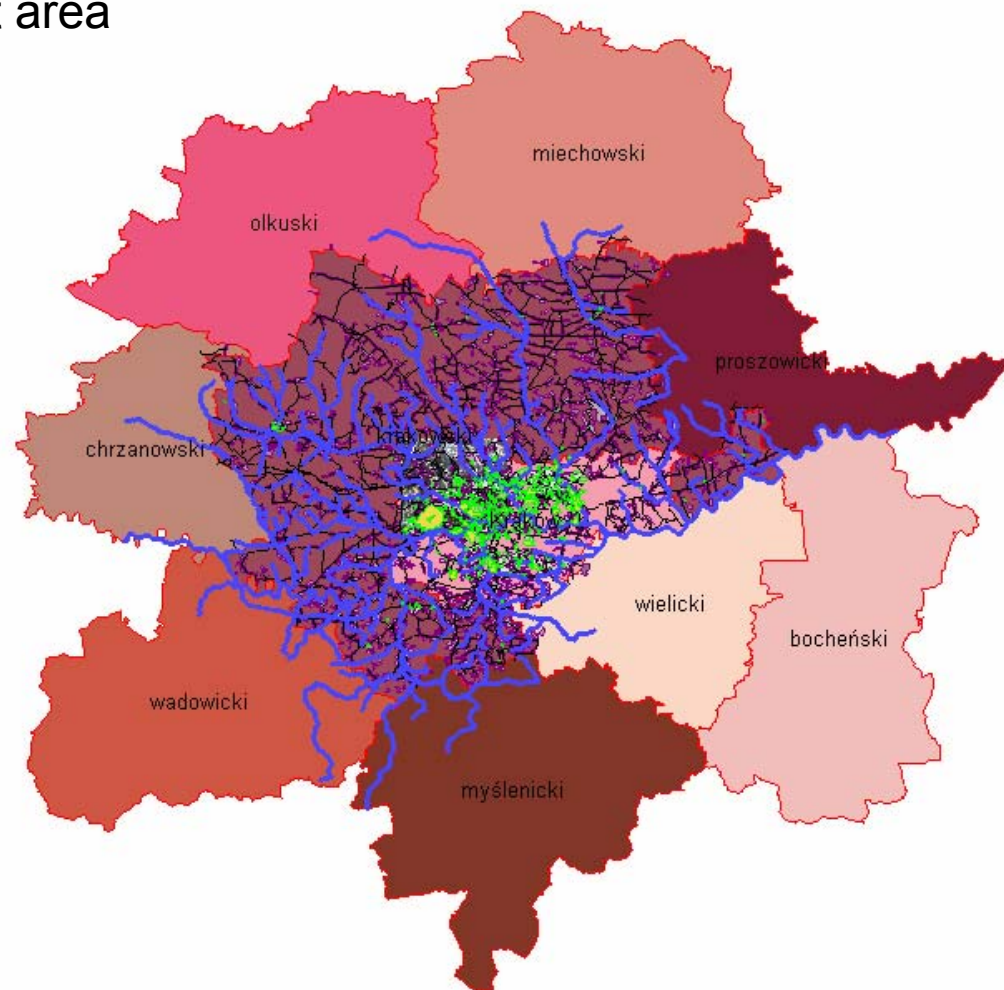
Projection +east;+north(m) 469674.90; 5502018.21

No Active Filter

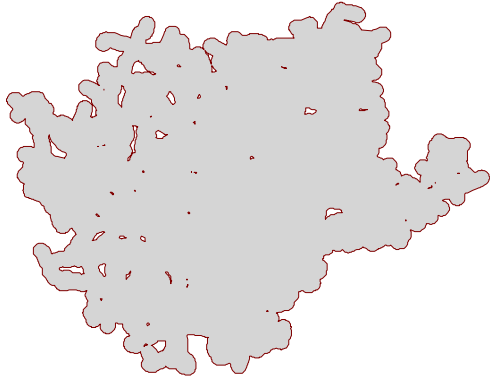
- KOMPLEKSY_SPOLECZNE
 - Edukacyjna i innowacyjna (140)
 - Handlowa i usługowa (78)
 - Kulturowa (61)
 - Opiekuńcza (18)
 - Rekreacyjno-sportowa (147)
 - Sakralna (39)
 - Szpitalna (24)
 - RZEKI (141)
 - DROGI (5545)
 - KOMPLEKSY_OSIED
 - Blokowa (127)
 - Jednorodzinna miejska (209)
 - Jednorodzinna wiejska luźna (517)
 - Jednorodzinna wiejska rozproszona (396)
 - Jednorodzinna wiejska zwarta (422)
 - Śródmiejska (8)
 - Zwarta (26)
 - orto (4)
 - Geometry Info about w3 (310)
 - w3 (310)
 - Base Geometry of w3 (322)
 - w3 od 10 do 100 ha (0)
 - w3 w2 minus kst (0)
 - w2 w1 minus kom os (0)
 - w1 dr minus rz (0)
 - Buffer DROGI (0)
 - Buffer KOMPLEKSY_OSIED (11)
 - Buffer RZEKI (3)
 - Color Composite Result Layer (1)

Display Order Groups

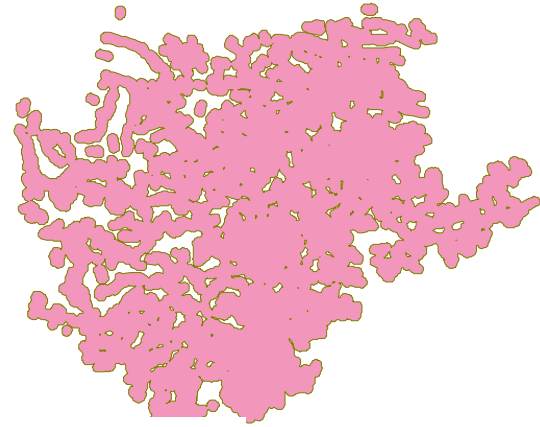
Test area



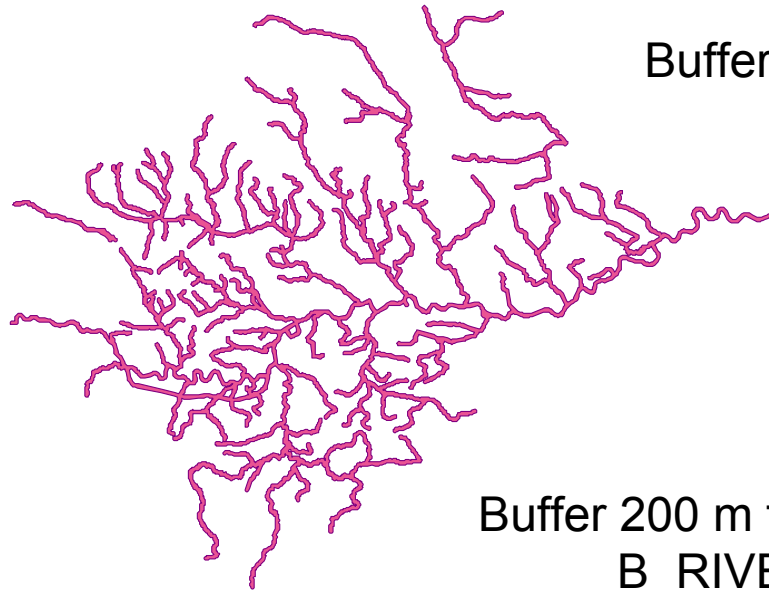
Limitation



Buffer 1000 m from roads
B_ROADS

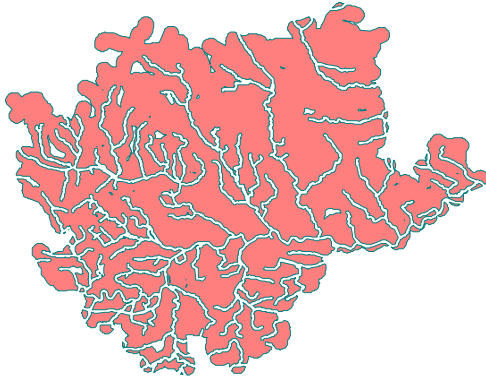


Buffer 500 m from urban area
B_URBAN

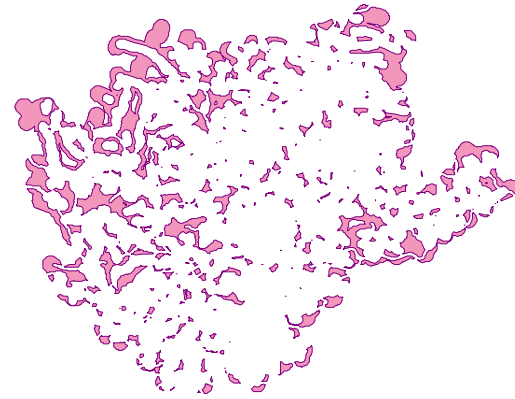


Buffer 200 m from rivers
B_RIVERS

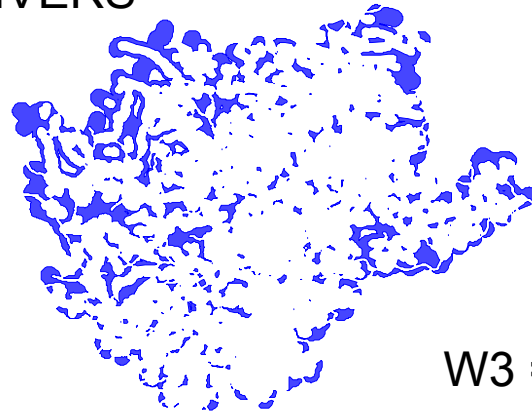
Spatial differences



$$W1 = B_ROADS - B_RIVERS$$

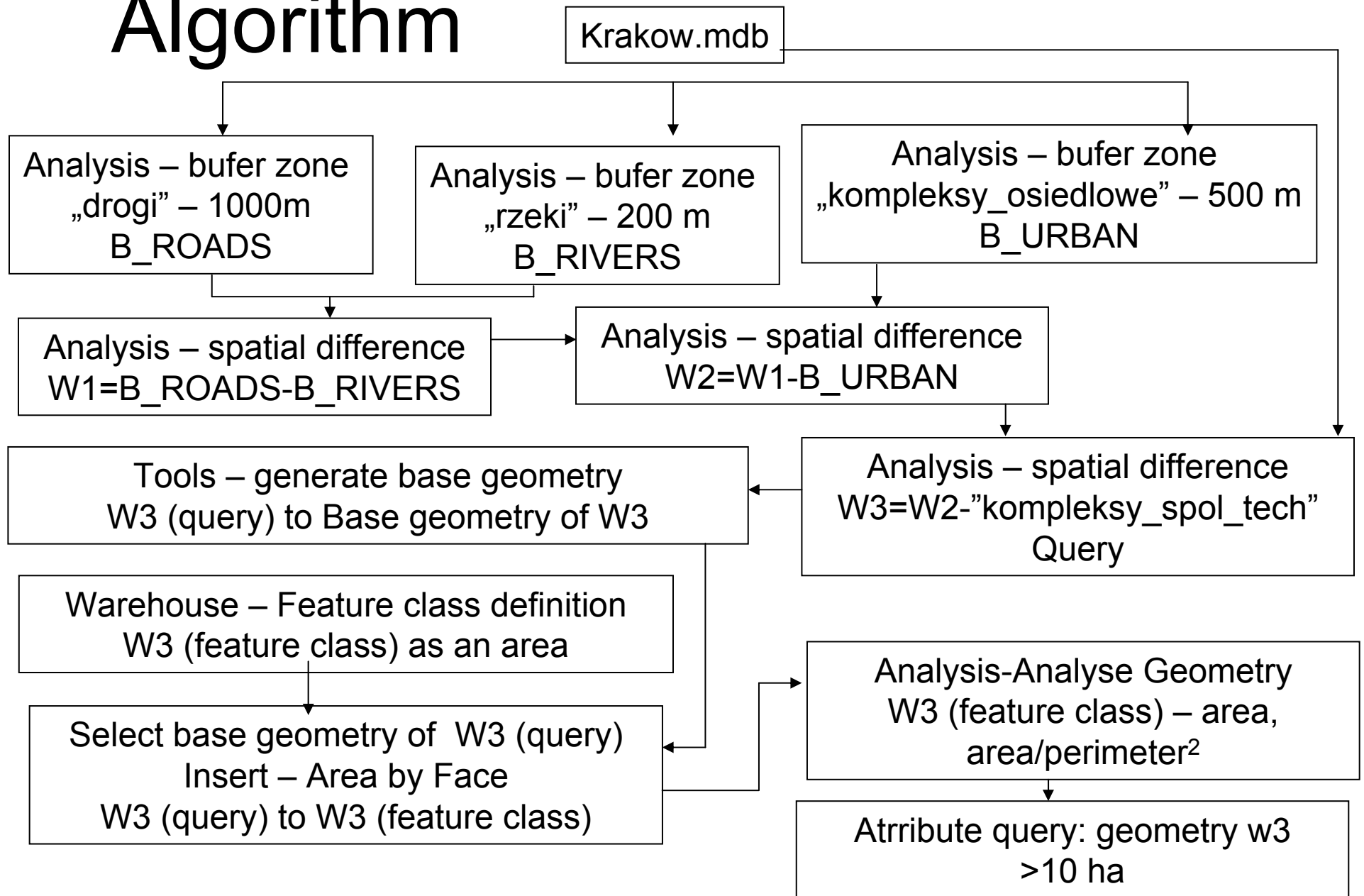


$$W2 = W1 - B_URBAN$$



$$W3 = W2 - ANY_URBAN$$

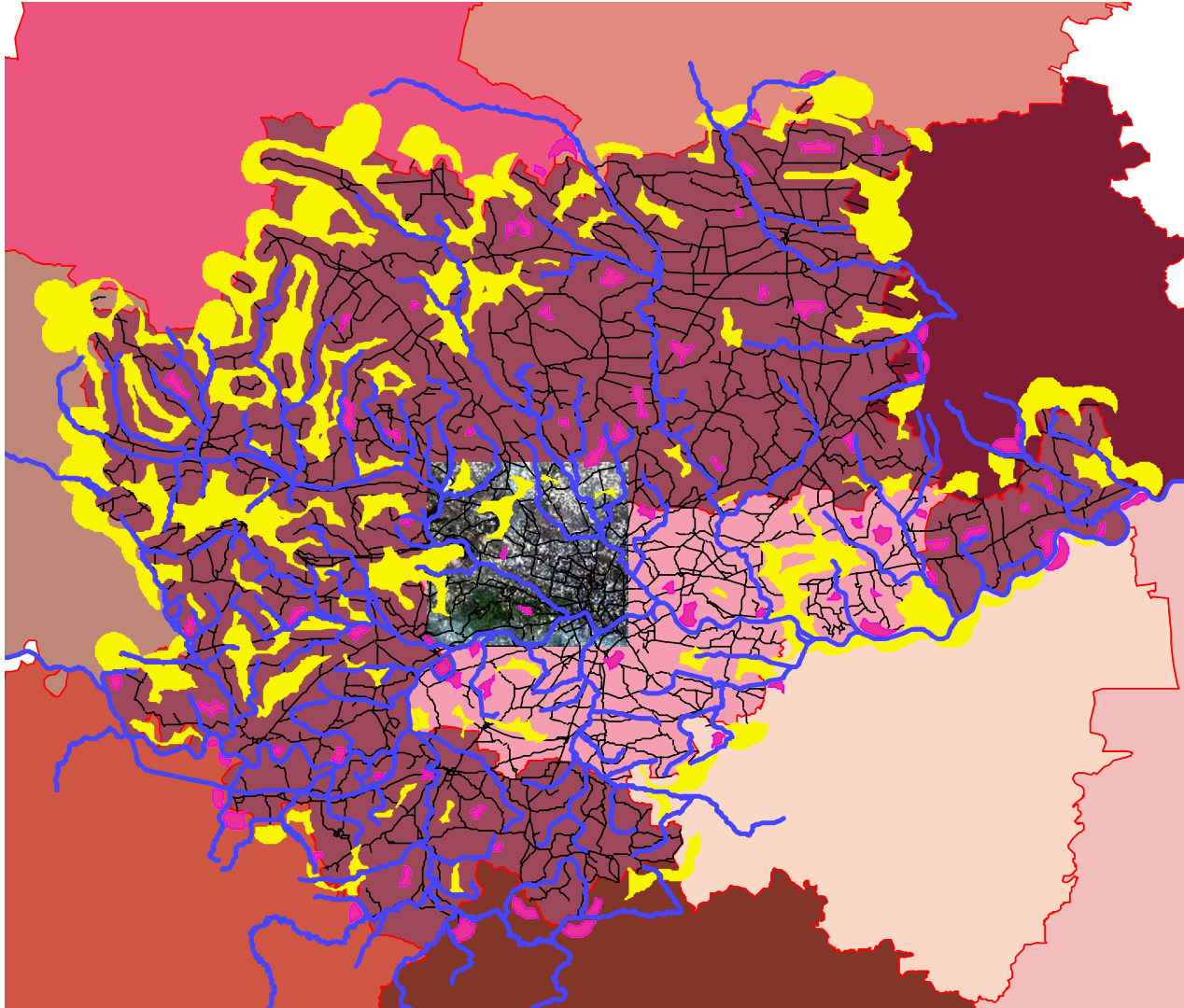
Algorithm



Notice: bufer zone allways - round, merge

Results

yellow all sites, magenta – area of 10-100 ha





north(m) 428801.06; 5553027.32



Labels of Attribute Query of Geometry Info about w3

KOMPLEKSY_SPOLECZNE

- Edukacyjna i innowacyjna (140)
- Handlowa i usługowa (78)
- Kulturowa (61)
- Opiekuńcza (18)
- Rekreacyjno-sportowa (147)
- Sakralna (39)
- Szpitalna (24)

RZEKI (141)

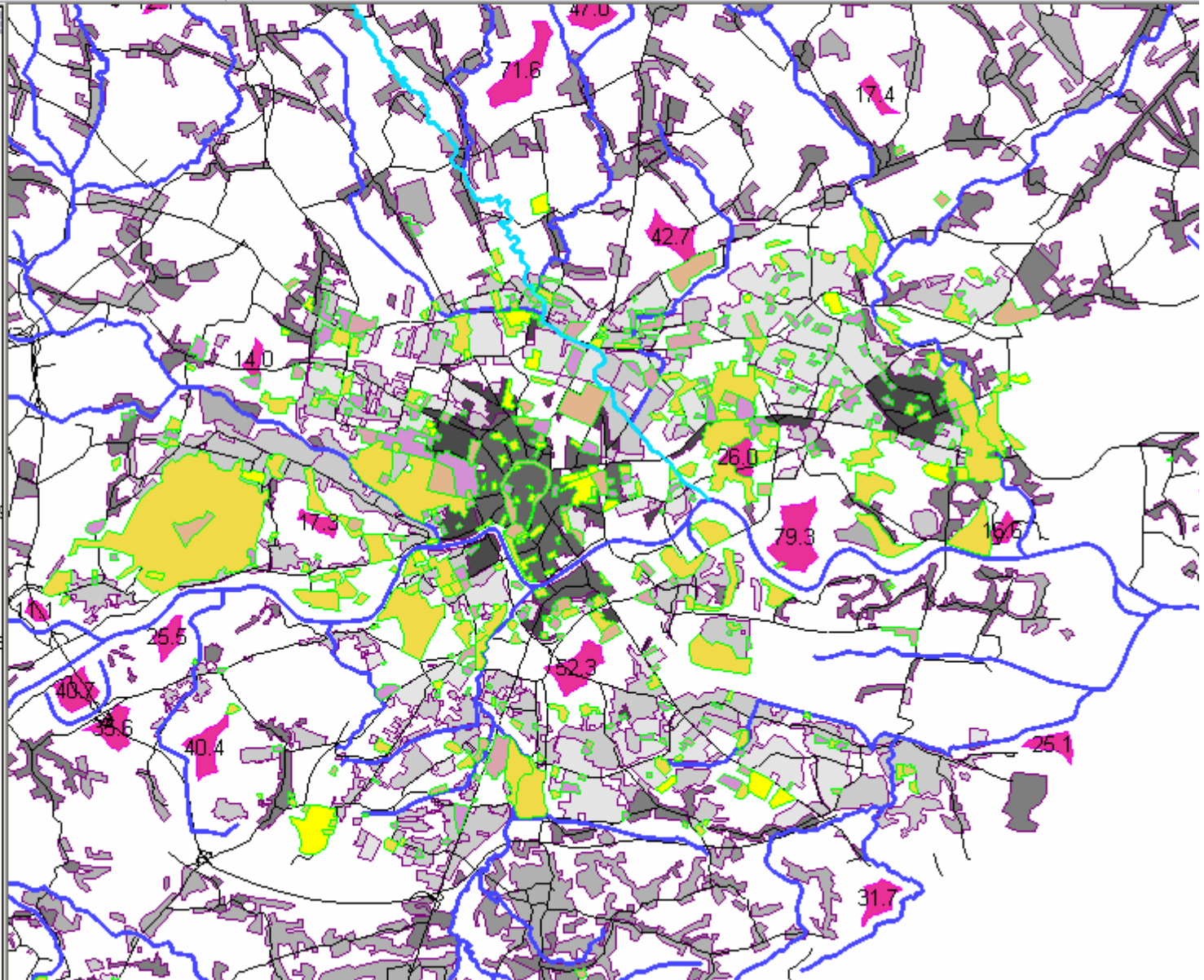
DROGI (5545)

KOMPLEKSY_OSIED

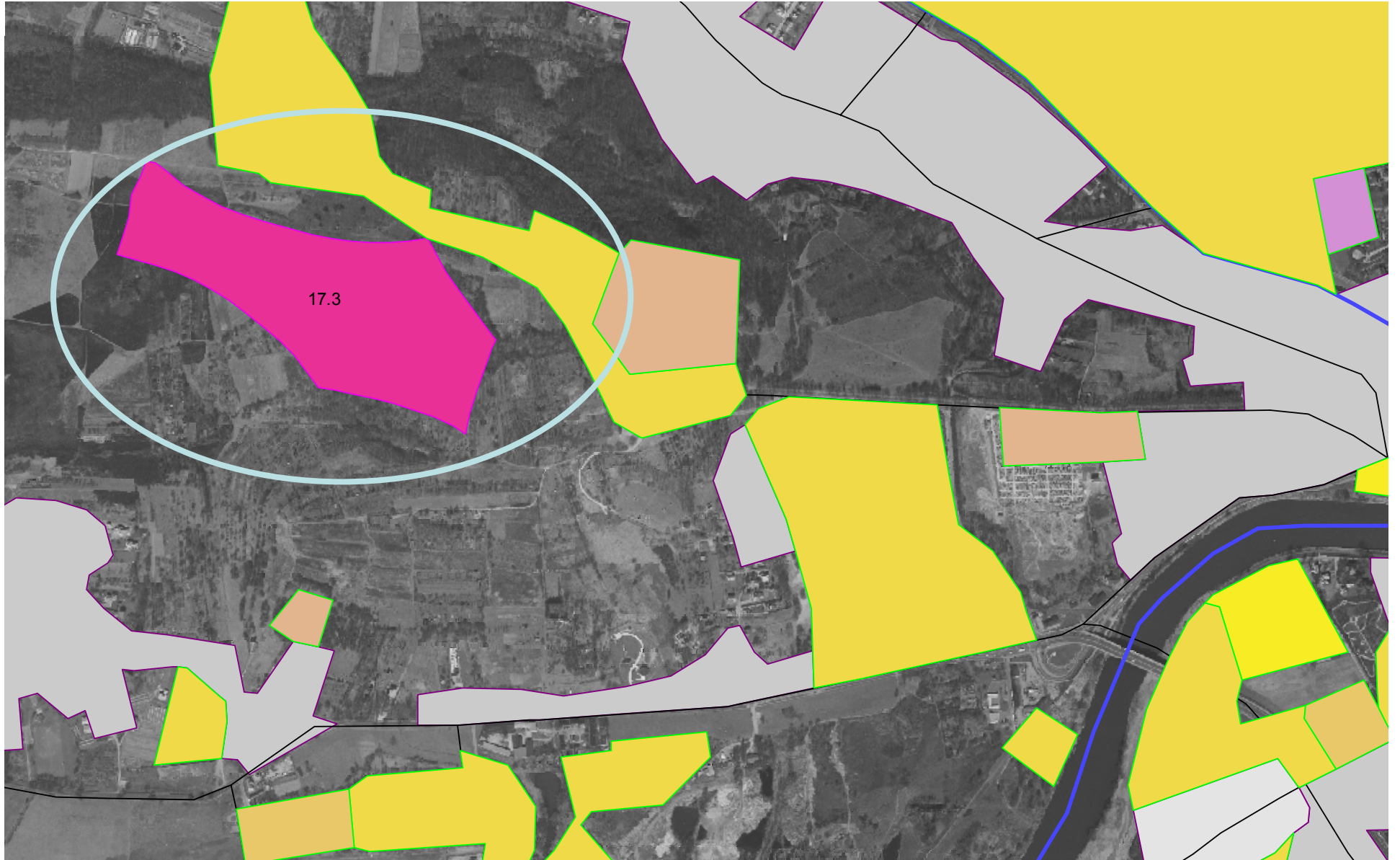
- Blokowa (127)
- Jednorodzinna miejska (209)
- Jednorodzinna wiejska luźna (517)
- Jednorodzinna wiejska rozproszona (39)
- Jednorodzinna wiejska zwarta (422)
- Śródmiejska (8)
- Zwarta (26)

Attribute Query of Geometry Info about w3 (8)

- Geometry Info about w3 (310)
- w3 (310)
- Base Geometry of w3 (322)
- w3 od 10 do 100 ha (0)
- w3 w2 minus kst (1)
- w2 w1 minus kom os (1)
- w1 dr minus rz (1)
- Buffer DROGI (1)
- Buffer KOMPLEKSY_OSIED (11)
- Buffer RZEKI (3)

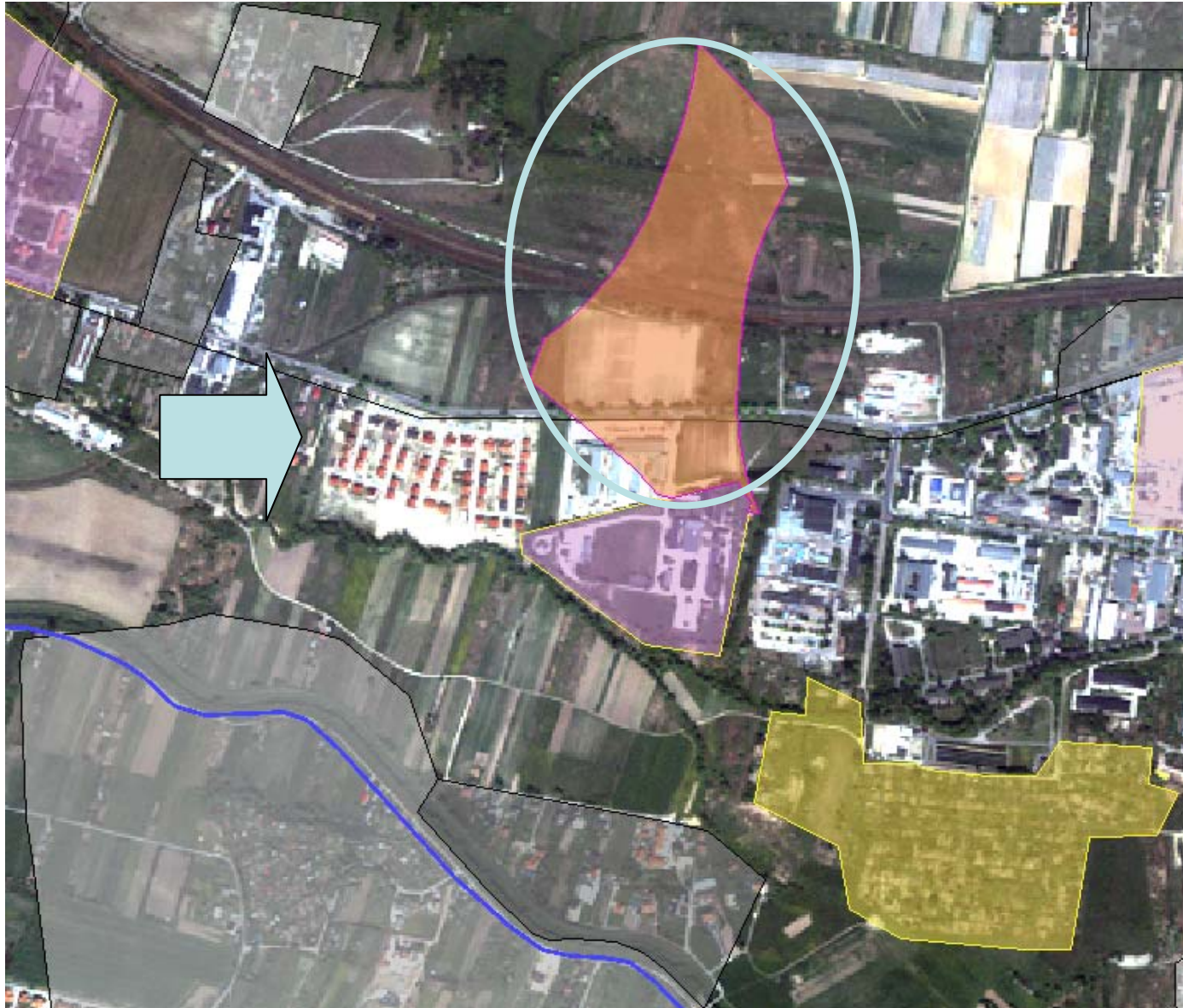




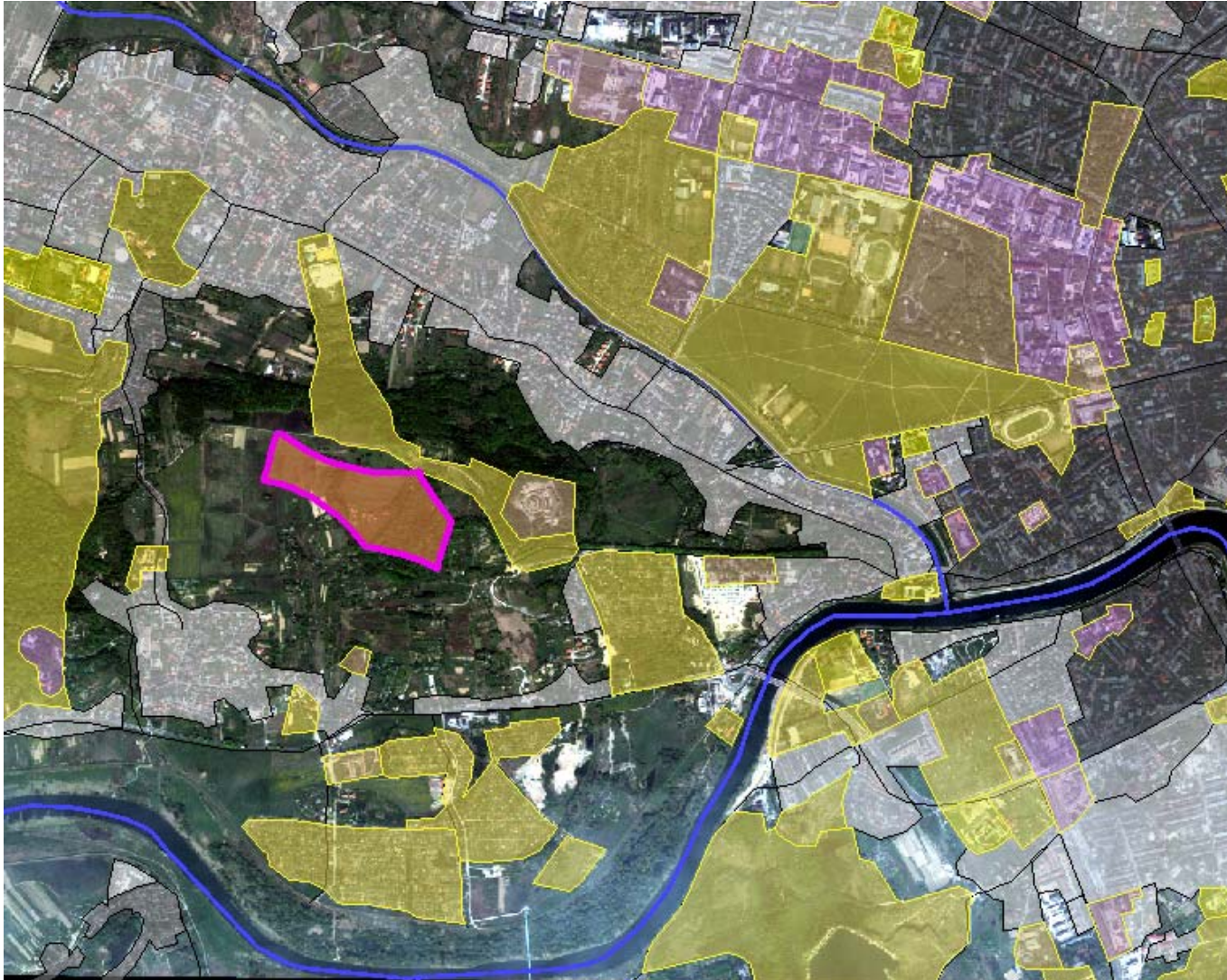


17.3

Data base quality



Site location analyses



Check data quality
data base improvement
repeat spatial analysis

