

SimulationTime 500
 SimulationStepTime 50
 Conductivity 25
 Alfa 300
 Tot 1200
 InitialTemp 100
 Density 7800
 SpecificHeat 700
 Nodes number 16
 Elements number 9

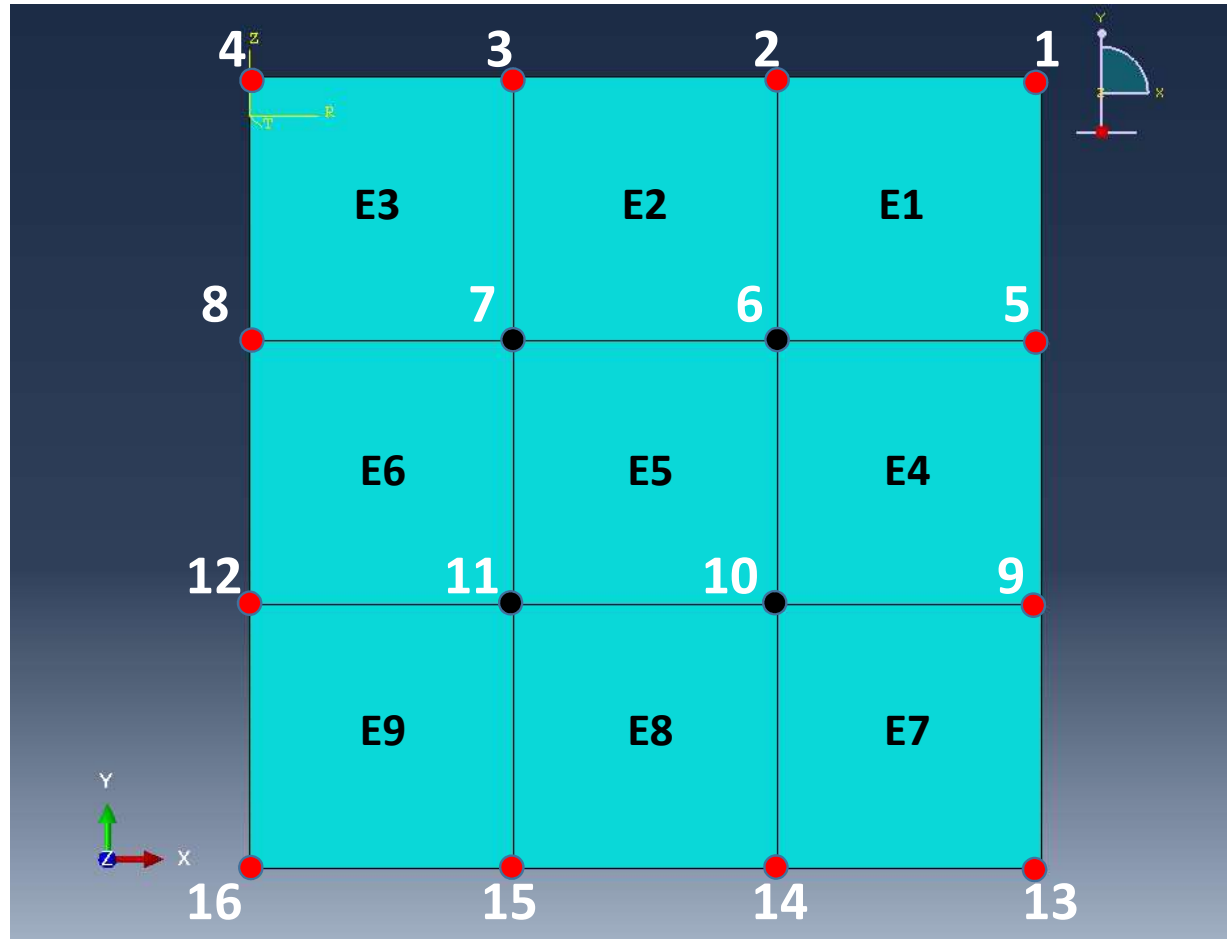
*Node
 1, 0.100000001, 0.00499999989
 2, 0.0666666701, 0.00499999989

 14, 0.0666666701, -0.0949999988
 15, 0.0333333351, -0.0949999988
 16, 0., -0.0949999988

*Element, type=DC2D4
 1, 1, 2, 6, 5
 2, 2, 3, 7, 6
 3, 3, 4, 8, 7
 4, 5, 6, 10, 9
 5, 6, 7, 11, 10
 6, 7, 8, 12, 11
 7, 9, 10, 14, 13
 8, 10, 11, 15, 14
 9, 11, 12, 16, 15

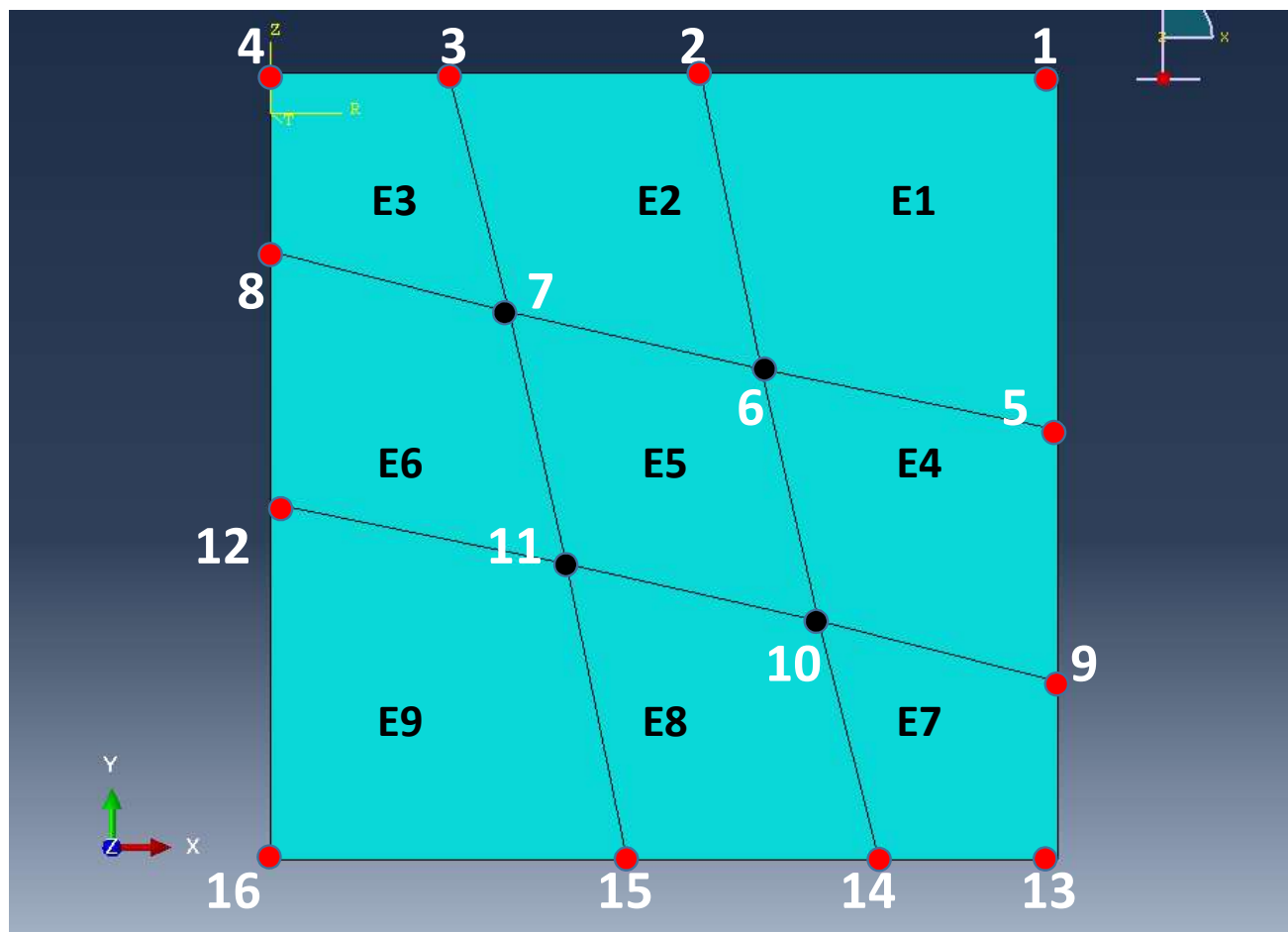
*BC
 1, 2, 3, 4, 5, 8, 9, 12, 13, 14, 15, 16

Import siatki MES

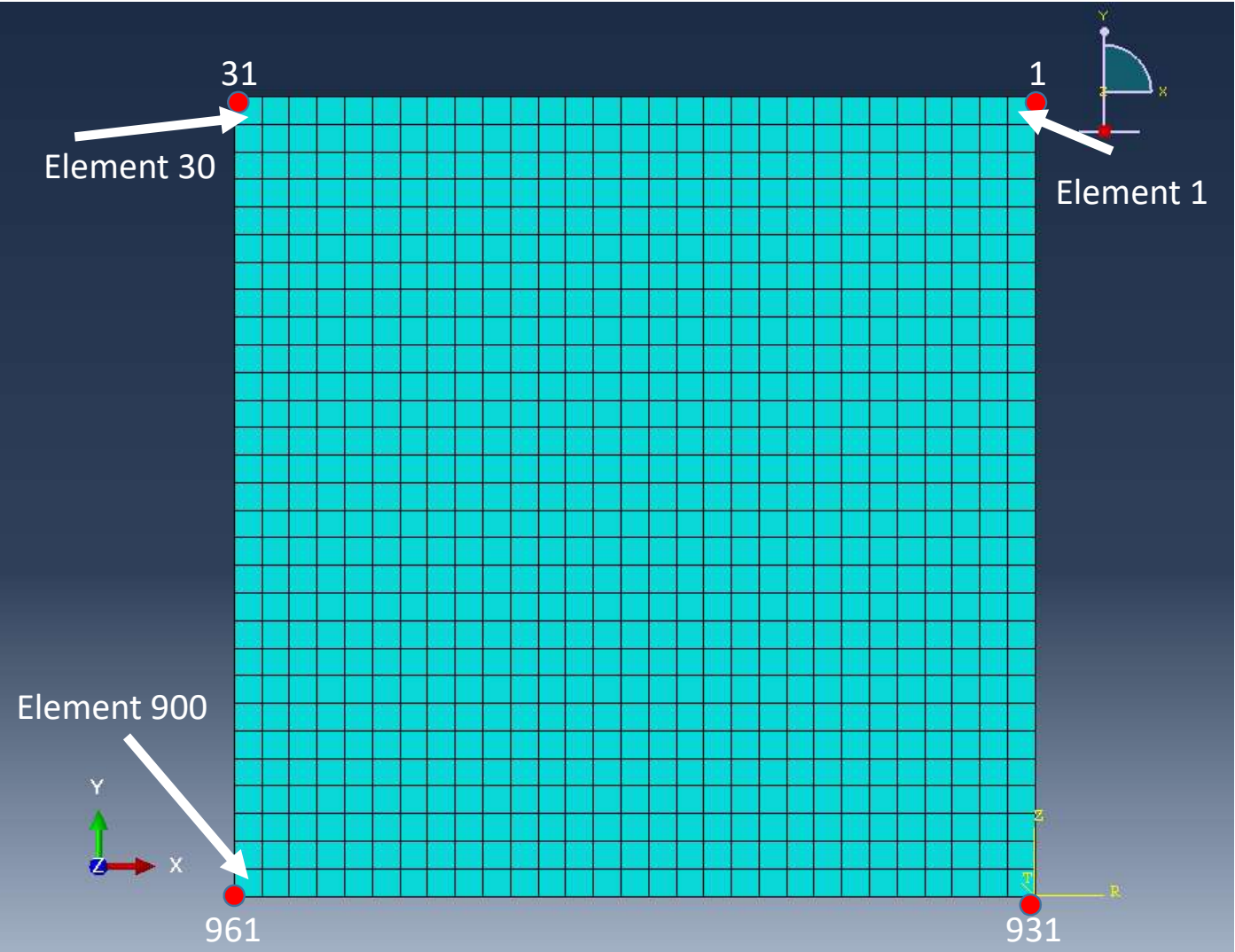


Test 1 siatka kwadratowa 4x4 węzły – Test1_4_4

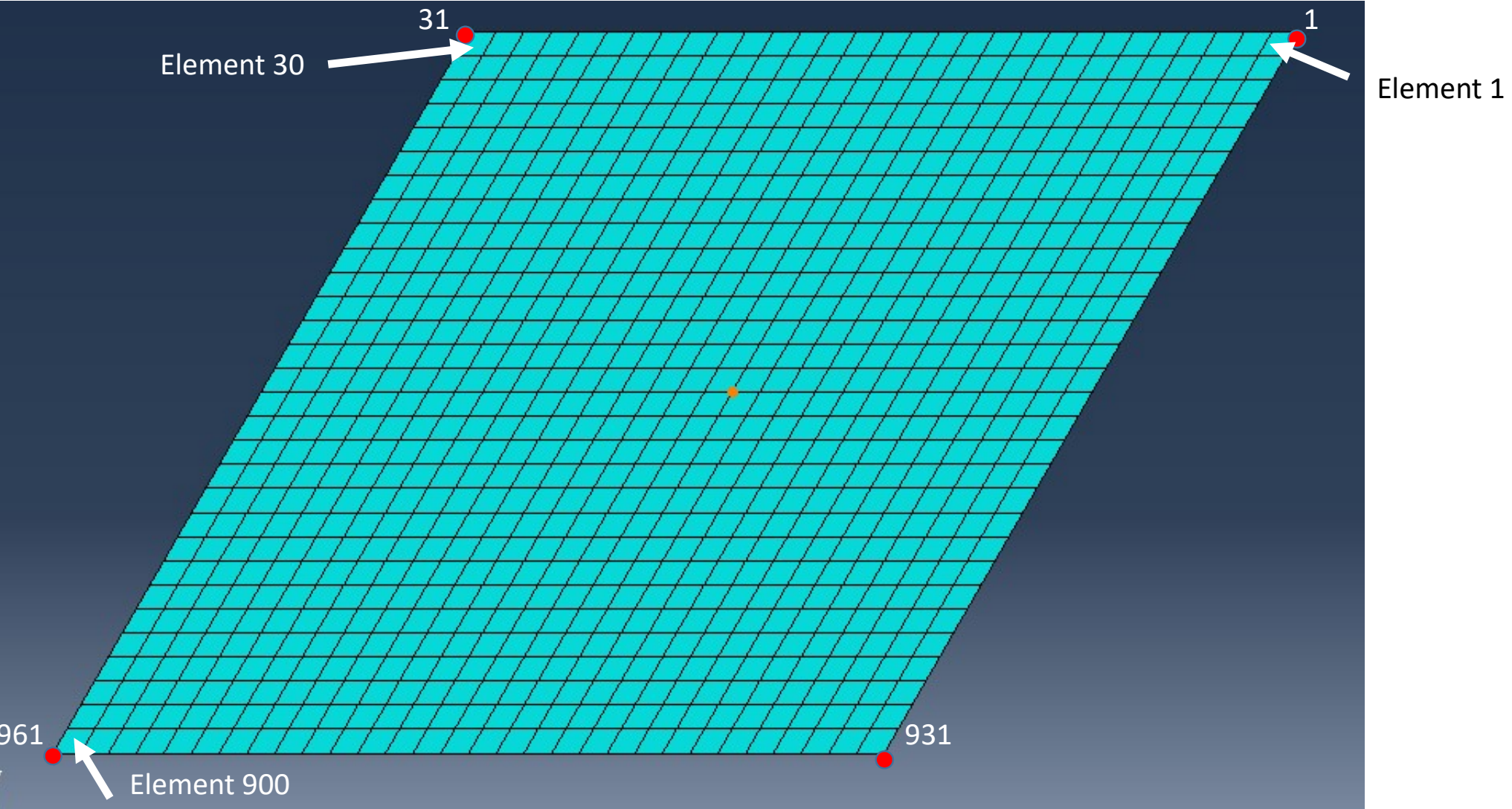
Test 2 siatka kwadratowa 4x4 węzły - Test2_4_4_MixGrid

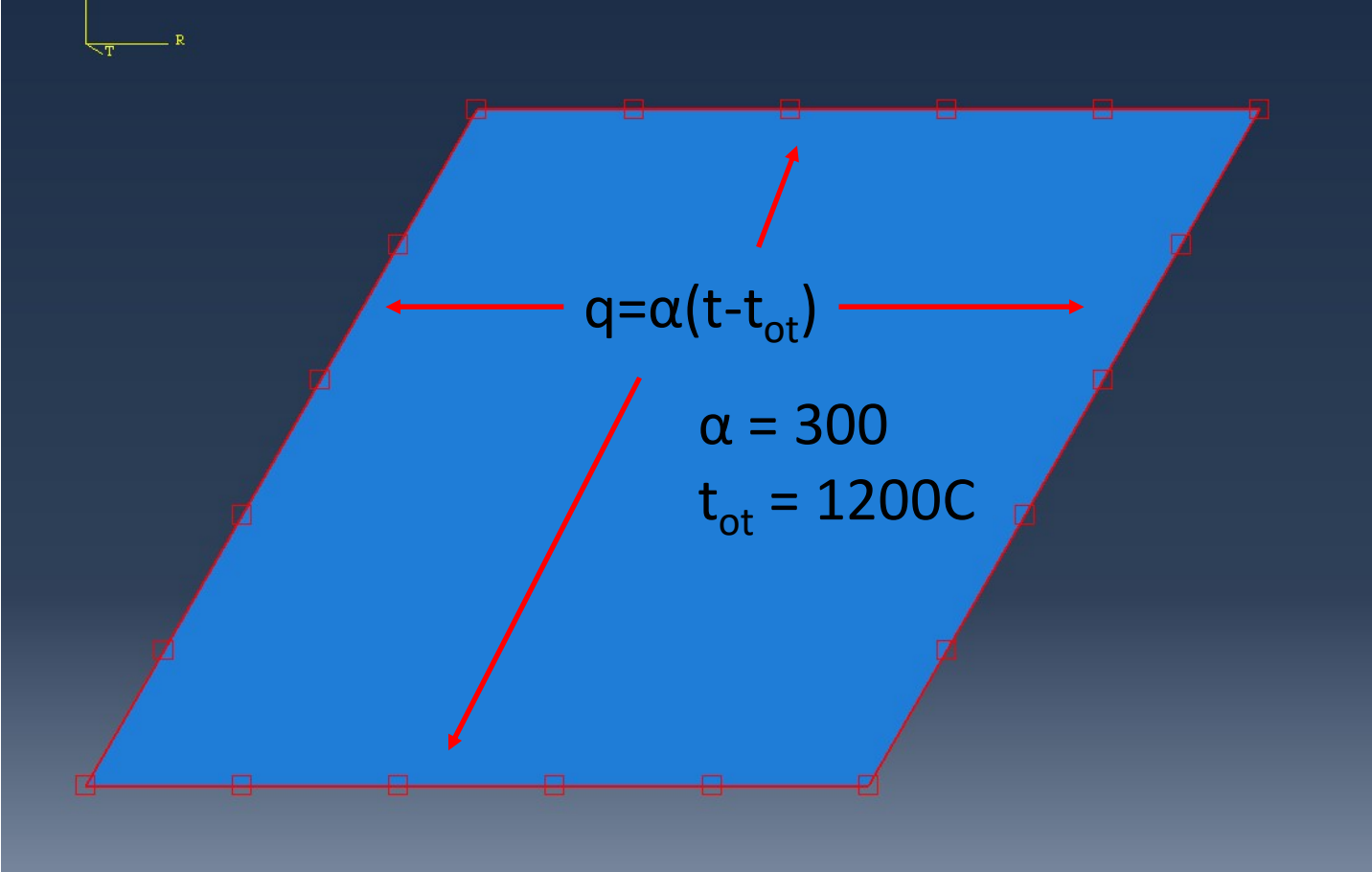


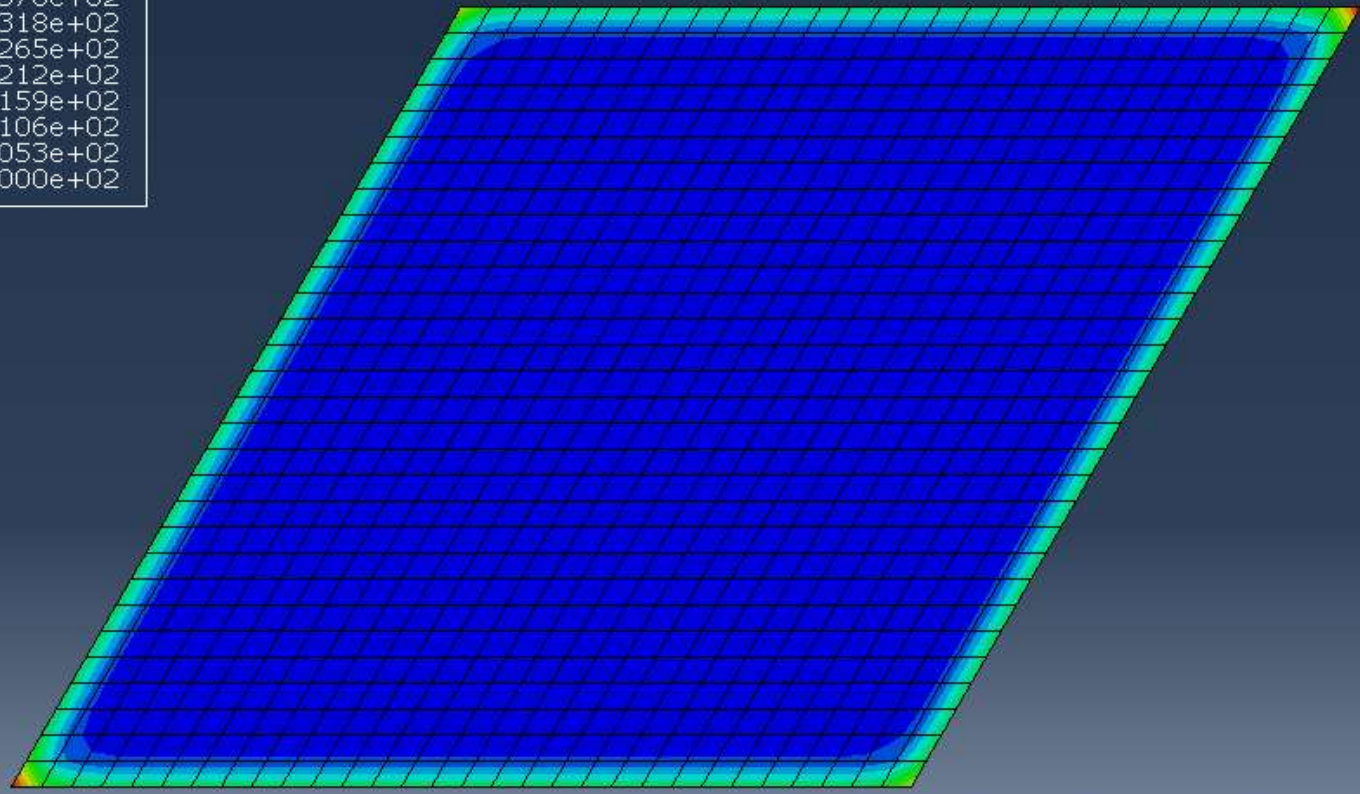
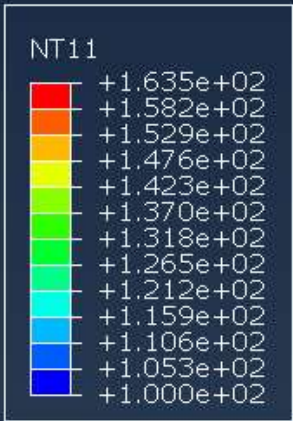
Test 3 siatka kwadratowa 31x31 – Test3_31_31_kwadrat



Test 4 siatka kwadratowa 31x31 – Test4_31_31_trapez

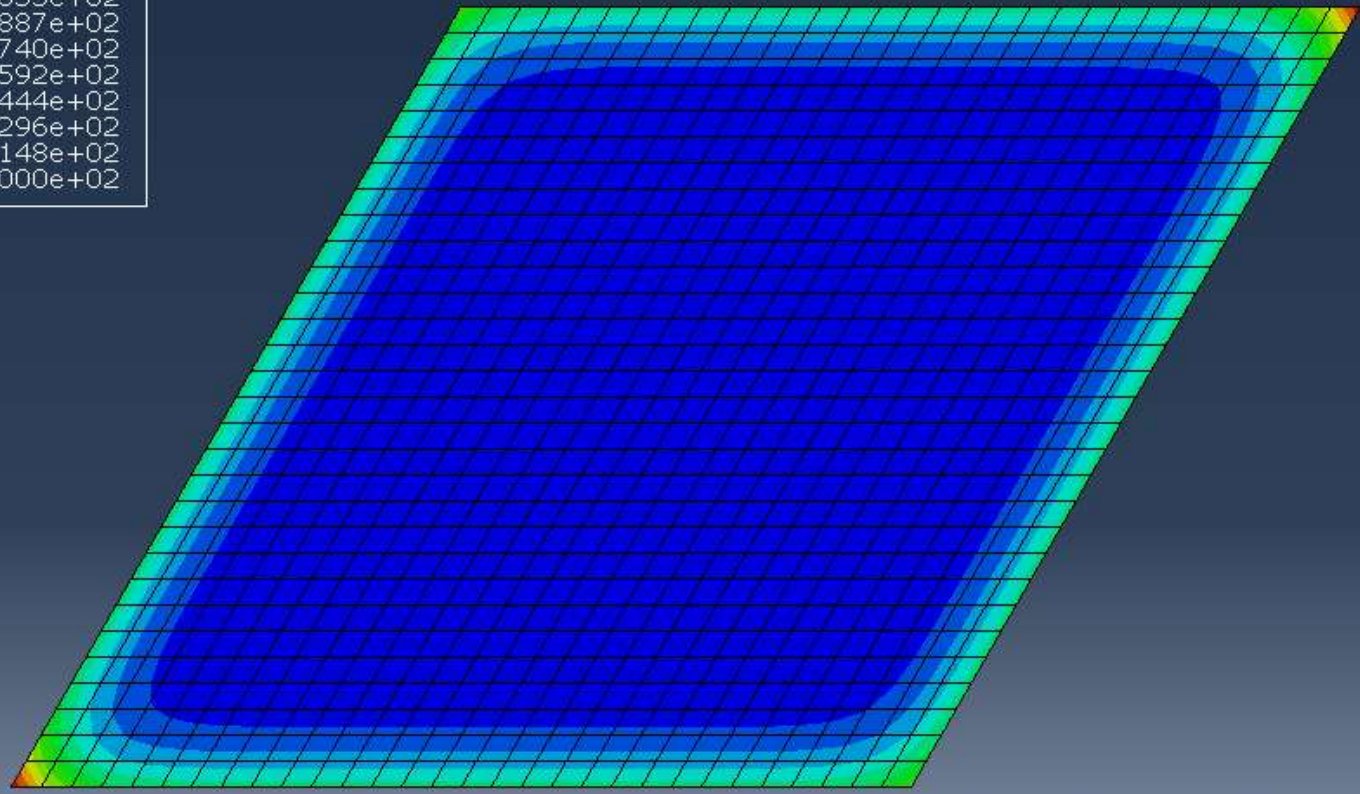
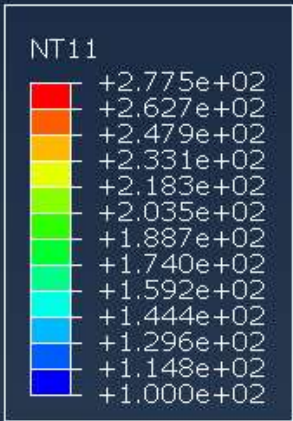






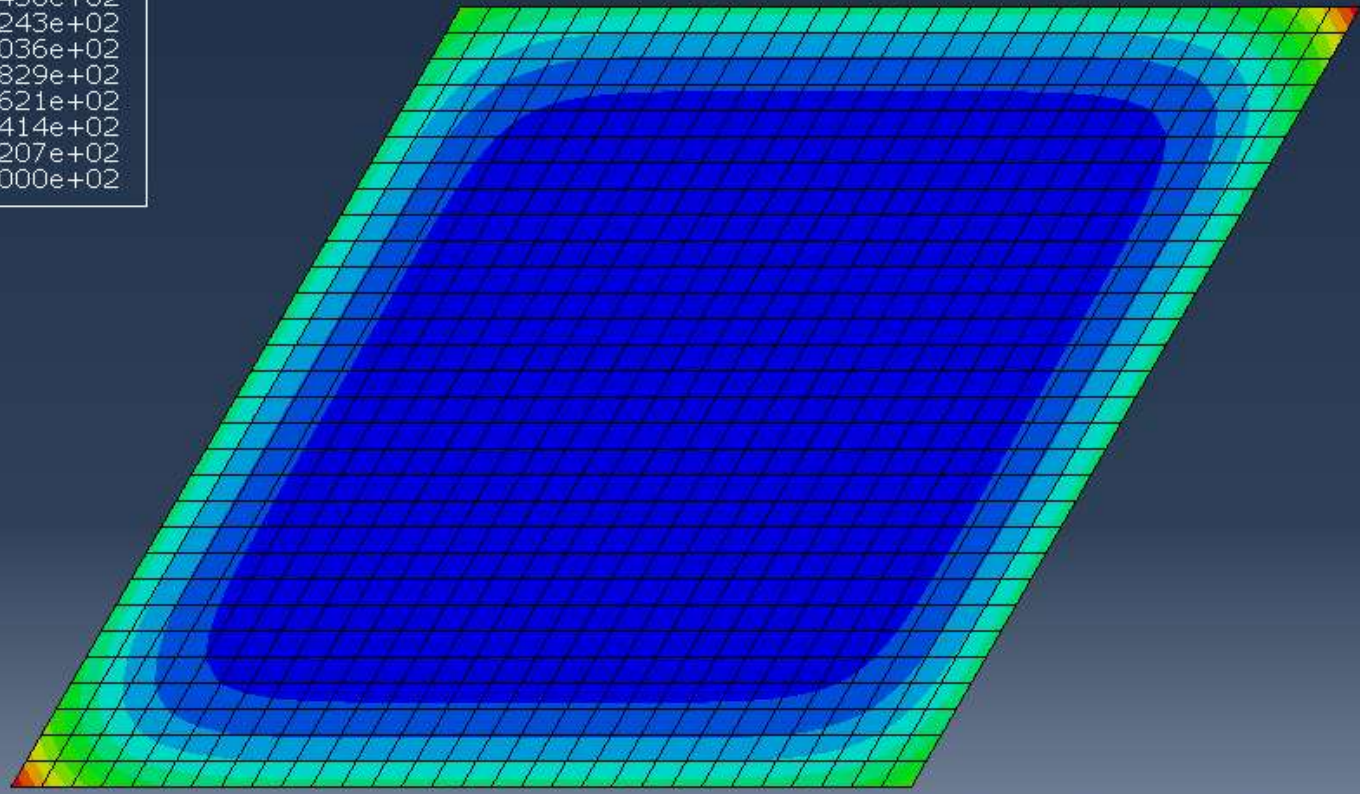
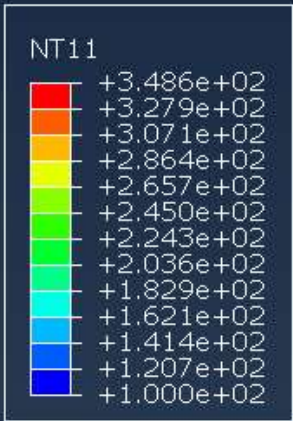
ODB: 2dHeatTransfer_trapez.odb Abaqus/Standard Student Edition 2019 Mon Dec 13 08:20:02 Srodkowoeur

Step: Step-1
Increment: 19
Primary Var: NT11
Step Time = 1.000



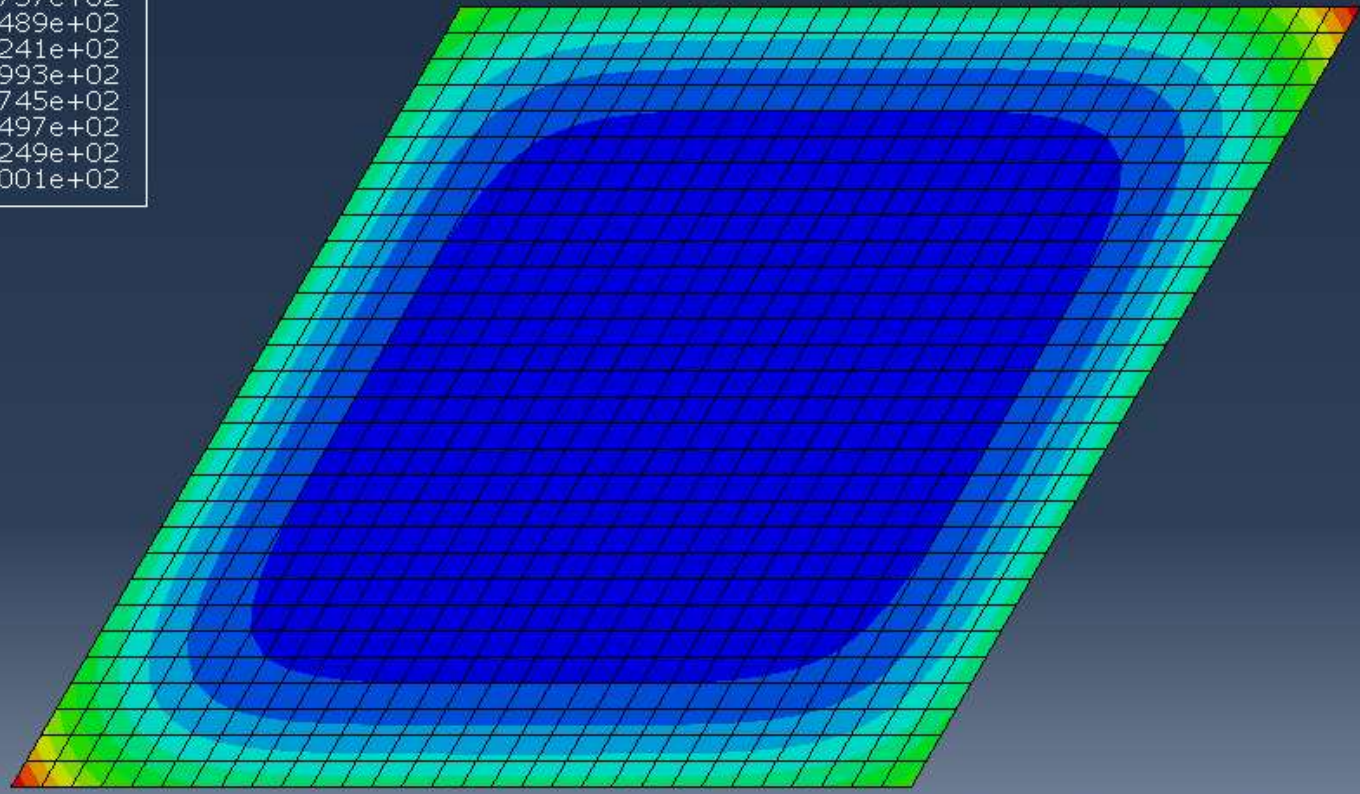
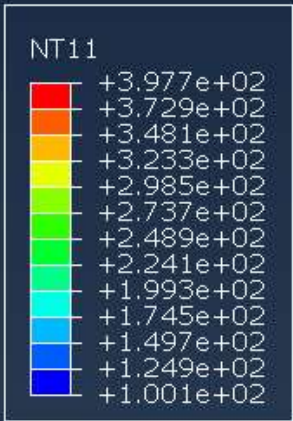
ODB: 2dHeatTransfer_trapez.odb Abaqus/Standard Student Edition 2019 Mon Dec 13 08:20:02 Srodkowoeur

Step: Step-1
Increment: 59
Primary Var: NT11
Step Time = 5.000



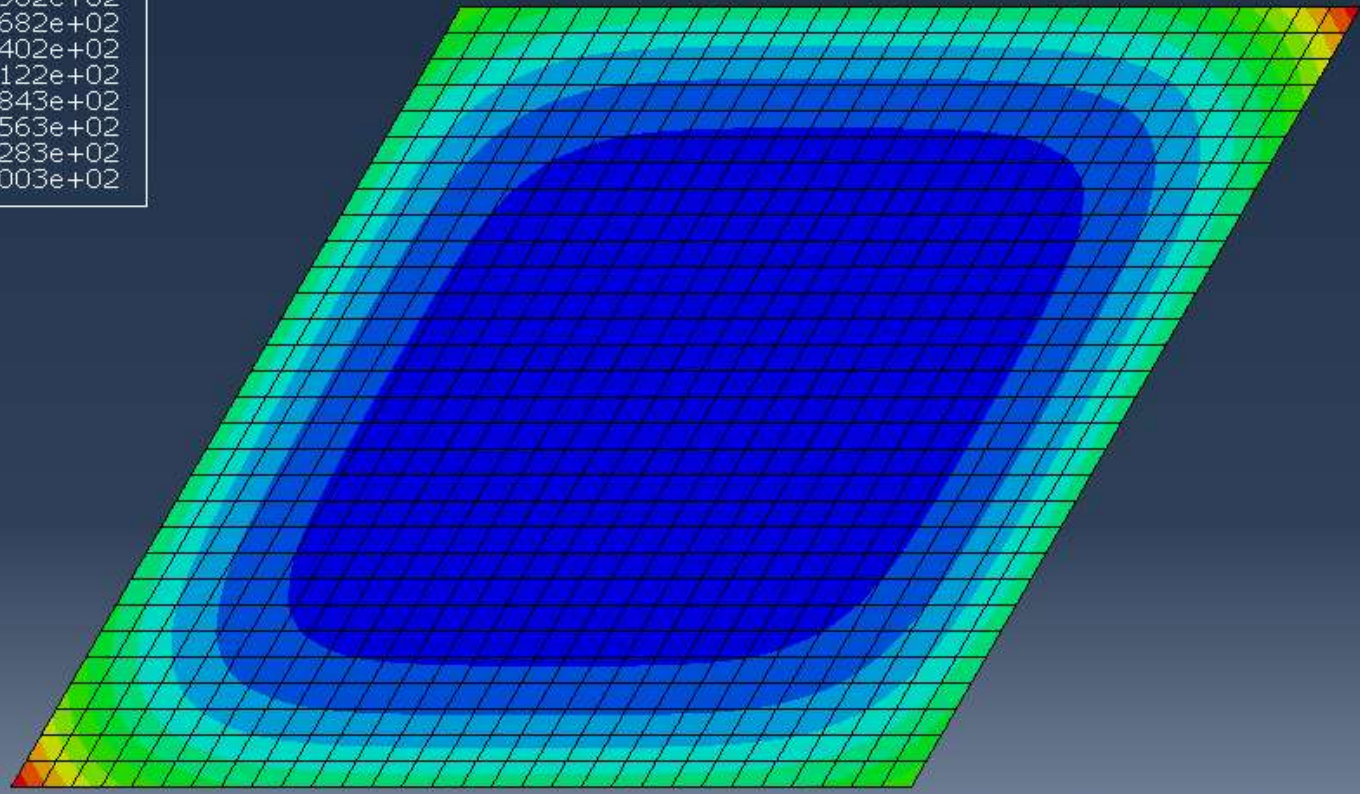
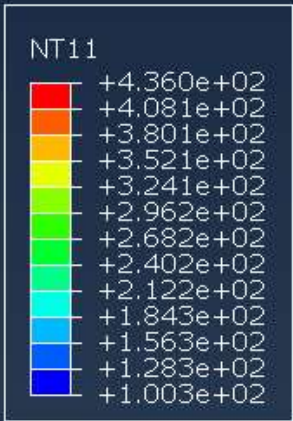
ODB: 2dHeatTransfer_trapez.odb Abaqus/Standard Student Edition 2019 Mon Dec 13 08:20:02 Srodkowoeur

Step: Step-1
Increment: 79 **Step Time = 10.00**
Primary Var: NT11
Deformed Var: not set Deformation Scale Factor: not set



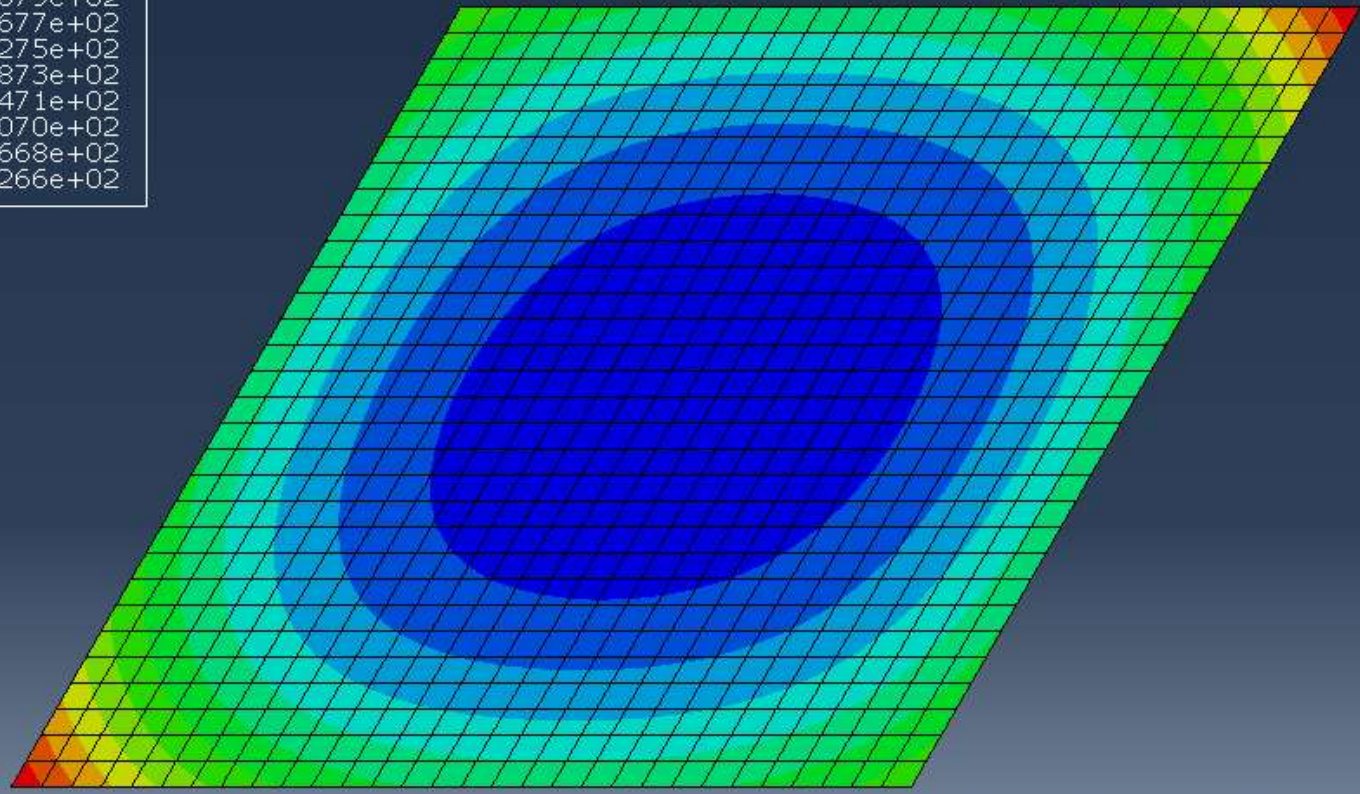
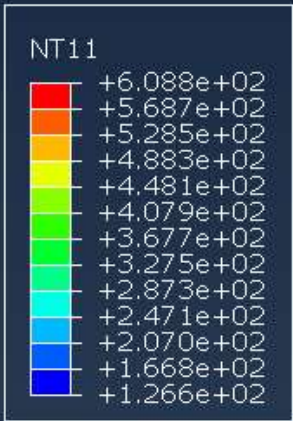
ODB: 2dHeatTransfer_trapez.odb Abaqus/Standard Student Edition 2019 Mon Dec 13 08:20:02 Srodkowoeur

Step: Step-1
Increment: 99
Primary Var: NT11
Step Time = 15.00



ODB: 2dHeatTransfer_trapez.odb Abaqus/Standard Student Edition 2019 Mon Dec 13 08:20:02 Srodkowoeur

Step: Step-1
Increment: 109; Step Time = 20.00
Primary Var: NT11
Deformed Var: not set Deformation Scale Factor: not set



ODB: 2dHeatTransfer_trapez.odb Abaqus/Standard Student Edition 2019 Mon Dec 13 08:20:02 Srodkowoeur

Step: Step-1
Increment: 189 Step Time = 60.00
Primary Var: NT11